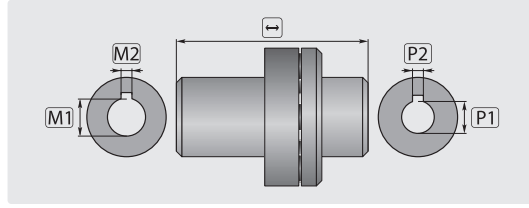


INTERPUMP couplings and flanges

Flexible couplings



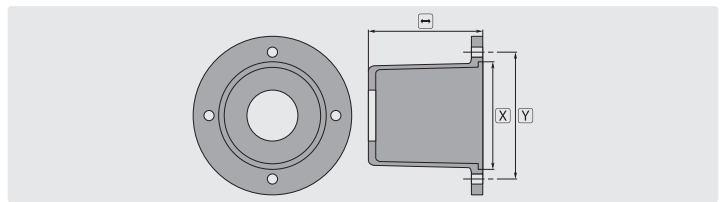
Rubber pads



R+M Nr.
100 090 47

R+M Nr.	TYP	↔	M1	M2	P1	P2	pump series
100 019 11	ZG091	93	28	8	24	8	50
100 151 11	ZG151	105	28	8	24	8	47 - 47VHT - 47SS - 66 - 66VHT - 66SS - E3
100 015 21	ZG202	114	38	10	24	8	47 - 47VHT - 47SS - 66 - 66VHT - 66SS - E3
100 004 41	ZG044	102	28	8	24	8	44 - 60 - 60VHT - 63 - 63HTS - 63SS - E2
100 013 21	ZG132	121	38	10	24	8	47 - 47VHT - 47SS - 66 - 66VHT - 66SS - E3

Flange



R+M Nr.	TYP	↔	X	Y	engine flange	pump series
100 009 10	ZF091	101	110	130	B3 - B14 (100)	50 - 51
100 015 10	ZF151	110	110	130	B3 - B14 (100-112)	47 - 47VHT - 47SS - 66 - 66VHT - 66SS - E3
100 004 40	ZF044	110	110	130	B3 - B14 (100-112)	44 - 60 - 60VHT - 63 - 63HTS - 63SS - E2
100 013 20	ZF132	127	130	165	B3 - B14 (132)	47 - 47VHT - 47SS - 66 - 66VHT - 66SS - E3

Gears for pumps

Type RS 500 for petrol engines



Gear ratio 1 : 2.2
 Engine: up to 18.5 kW
 Motor shaft Ø 25.4 mm = 1"
 Pump shaft Ø 24 mm. Engines:
 Acme, Aspera Motors, Briggs & Stratton, Honda, CO.TIEMME, Intermotor, Lombardini, Ruggerini. Pumps: Comet: LW, HW, RW, SW, TW. AR: serie 228, serie 194. IP: serie 47, serie 66

R+M Nr.
109 510 00

Type B 18 for petrol engines



Gear ratio 1 : 2.176.
 Engine: 8 - 13 KW.
 Motor shaft Ø 25.4 mm = 1"
 Pump shaft Ø 24 mm. Engines:
 Acme, Aspera Motors, Briggs & Stratton, Honda, CO.TIEMME, Intermotor, Lombardini, Ruggerini. Pumps: AR, Bertolini, Comet, Interpump, Leuco, Hawk, Udor

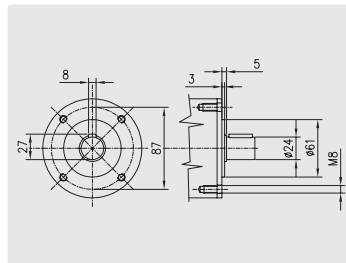
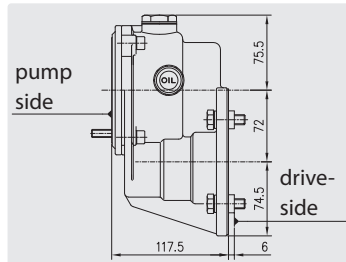
R+M Nr.
176 000 000

Type M 261 for p. t. o. shafts



Gear ratio 2.61 : 1.
 Engine: 11.19 KW at 540 r.p.m.
 Motor shaft Ø 1" 3/8 Z 6. (P.T.O.)
 Pump shaft Ø 24 mm.
 Engines:
 Comet: LW, HW, RW, FW, TW.
 AR: serie 228.
 IP: serie 47, serie 66

R+M Nr.
172 900 095



Pump unit with power take-off (p.t.o.) shaft gearbox



Ready to fit high pressure pump with regulation valve ST-280.
 Pressure gauge 0 - 250 bar. Bypass hose and water filter ST-33.
 Water inlet temperature max 30 °C

R+M Nr.	↻	⊖	P	↔
179 030 166 92	M22 M	3/4" F	160 bar	30 l/m

Symbols ⊖ inlet ⊖ outlet VPE packing unit 🚚 shipment by truck