

Mosmatic air spinner system

Air system spinner LU-B for floor fastening



Spinner with a moving radius of 360°. Height 3,100 mm

R+M Nr.	↔	M	⊙	⊞
108 603 12	1,600 mm	stainless steel	⊙ 50 mm	18.0 kg

90° elbow pipe



1 pipe clamp

R+M Nr.	⊙
108 603 14	⊙ 50 mm

Extension



1 pipe clamp. 1,000 mm

R+M Nr.	⊙
108 603 15	⊙ 50 mm

Rotating socket



1 pipe clamp

R+M Nr.	⊙
108 603 23	⊙ 50 mm

Clip flue

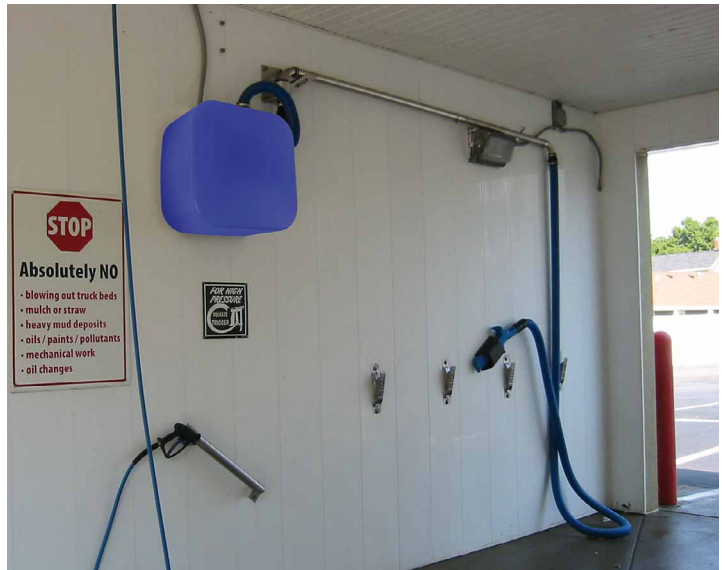


2 pipe clamps. ↔ Max. 1.5 m

R+M Nr.	⊙
108 603 20	⊙ 50 mm

System is also available in 40 mm.

Mosmatic self-service air dryer



To easily dry in a quick and uncomplicated way!

Substantially reduces water spots, no impairment of the paint – both in summer and winter. The strong blower and the especially moulded air nozzle guarantee a polished and spotless result. It dries the smallest gaps such as door joints, wing mirrors, radiator grills etc. and really eliminates water spots. Combined with a Mosmatic air spinner system the dryer is for sure an interesting and very profitable attraction at your wash bay.

Attention: Connection should be carried out by authorised staff only!

Specifications

Dimension drying unit	533 mm x 533 mm.
Dimension universal plate	421 mm x 421 mm



Drying unit with 75 cm hose connection ⊙ 50 mm, universal plate for mounting the dryer, special air nozzle with 4.5 m hose connection ⊙ 50 mm, wall holder for mounting the special air nozzle, information and operation sign.

R+M Nr.	V	W
108 603 96	220 - 240 Volt 50 / 60 Hz	2 motors à 1,600 Watt



Symbols ⊙ diameter ⊕ inlet ⊖ outlet ℃ temperature P pressure ⊙ thread M material ↔ length ⊞ weight