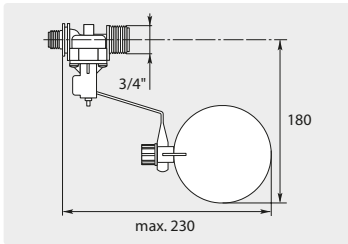


Schwimmerventile

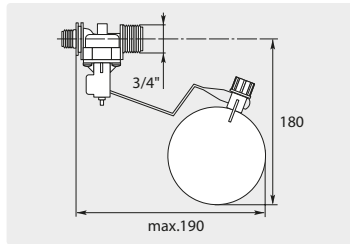
AK mit Ball horizontal



Kunststoff.
Druck 0,3 - 10 bar.
Max. 22 l/min / 60 °C

R+M Nr.	↻	↺	⊙
701 402	3/4" AG	3/4" AG	10 mm

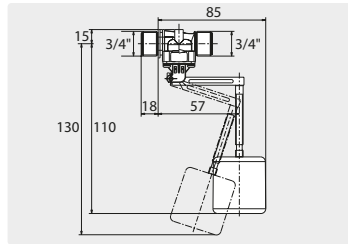
AK mit Ball vertikal



Kunststoff.
Druck 0,3 - 10 bar.
Max. 22 l/min / 60 °C

R+M Nr.	↻	↺	⊙
701 404	3/8" AG	3/4" AG	10 mm

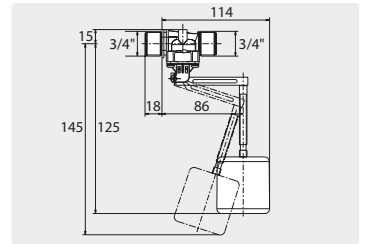
AK mit PE-Schwimmer



PE-Schwimmer.
Druck 0,3 - 10 bar.
Max. 22 l/min / 60 °C

R+M Nr.	↻	↺	⊙
701 405	3/4" AG	3/4" AG	10 mm

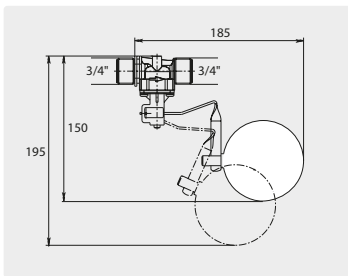
AK mit PE-Schwimmer



PE-Schwimmer.
Druck 0,3 - 10 bar.
Max. 22 l/min / 60 °C

R+M Nr.	↻	↺	⊙
701 408	3/4" AG	3/4" AG	10 mm

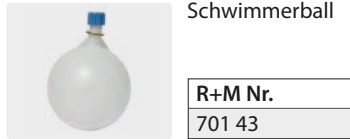
AK mit Ball



Kunststoff.
Druck 0,3 - 10 bar.
Max. 22 l/min / 60 °C

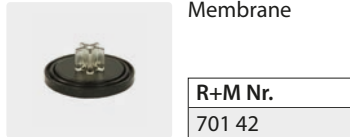
R+M Nr.	↻	↺	⊙
701 403	3/4" AG	3/4" AG	10 mm

Zubehör AK



Schwimmerball

R+M Nr.	
701 43	



Membrane

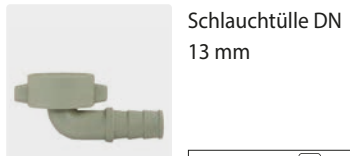
R+M Nr.	
701 42	

Zubehör AK-Ventile



Befestigungsflansch

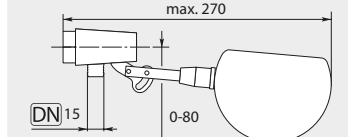
R+M Nr.	
701 41	



Schlauchtülle DN 13 mm

R+M Nr.	
711 60	3/4" IG

ST-8 mit Ball



Messing / Kunststoff.
Max. 10 bar / 22 l/min / 60 °C

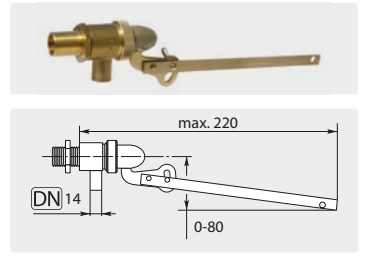
R+M Nr.	↻	⊙
200 008 520	1/2" IG	12 mm

Schwimmerball ST-8



R+M Nr.	TYP
030 000 180	Schwimmer
020 000 610	Schraube

PEKI ohne Ball



3/8" AG. Messing. Max. 10 bar / 85 °C

R+M Nr.	↻	⊙
701 00	16 l/min	8 mm
701 05	30 l/min	12 mm

Schwimmerball PEKI



Max. 60 °C

R+M Nr.	
701 35	

Schwimmerschalter LS809-51



Kunststoff. Kabellänge 500 mm.
2-adrig. 250 V / 1 A / 70 W.
-30 °C - +105 °C

R+M Nr.	
701 880 951	

Kunststoff



Messing / Kunststoff. 3/4" AG.
DN 9,5. Max. 60 °C

R+M Nr.	
701 500 100	



R+M Nr.	
701 39	

Dichtsatz PEKI



R+M Nr.	
701 001	