

Egg-type Radial-Nozzles

Best performing and most durable design for higher efficiency. These are light and agile used as a great all around nozzle with replaceable inserts. They include a forward jet. The egg-type radial nozzle is wear resistant and cost competitive. Great for sanitary applications. With unrivaled cleaning power on heavy encrusted grease and sludge, hardened stainless steel body and replaceable nozzle inserts for longer life.

The ideal tool for the toughest applications of hard grease and scale that may be encrusted on the interior wall of the pipe. Material: Hardened stainless steel. Max. 500 bar / 150 °C



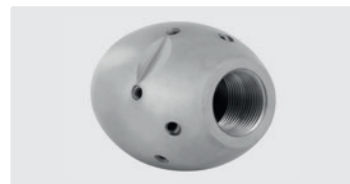
1/4" F. 6x 75° 3x 30° +1x 0°. 25-70 l/min. For R D 75-150 mm. Outside D 30 mm. G 223 g.



3/8" F. 6x 75° 3x 30° +1x 0°. 30-100 l/min. For R D 100-200 mm. Outside D 35 mm. G 314 g.



1/2" F. 6x 75° 3x 30° +1x 0°. 80-140 l/min. For R D 120-250 mm. Outside D 40 mm. G 630 g.



3/4" F. 6x 75° 3x 30° +1x 0°. 100-250 l/min. For R D 150-300 mm. Outside D 50 mm. G 1,367 g.

R+M Nr.	D	G
649 110 219 065	065	50
649 110 219 080	080	50
649 110 219 100	100	50
649 110 219 120	120	50
649 110 219 150	150	50
649 110 219 200	200	50

R+M Nr.	D	G
649 110 319 065	065	55
649 110 319 080	080	55
649 110 319 100	100	55
649 110 319 120	120	55
649 110 319 150	150	55
649 110 319 200	200	55

R+M Nr.	D	G
649 110 419 080	080	70
649 110 419 100	100	70
649 110 419 120	120	70
649 110 419 150	150	70
649 110 419 200	200	70
649 110 419 250	250	70

R+M Nr.	D	G
649 110 519 100	100	100
649 110 519 120	120	100
649 110 519 150	150	100
649 110 519 200	200	100
649 110 519 250	250	100
649 110 519 310	310	100

Egg-type Nozzles

Best performing and most durable design for higher efficiency. These are light and agile used as a great all around nozzle with replaceable inserts. They include a forward jet. The egg-type nozzle is wear resistant and cost competitive. Great for sanitary applications.

Threaded inserts can easily be serviced/replaced for longer life span. Material: Hardened stainless steel. Max. 500 bar / 150 °C



1/4" F. 6x 75° +1x 0°. 20-50 l/min. For R D 50-100 mm. Outside D 30 mm. G 127 g.



3/8" F. 6x 75° +1x 0°. 25-70 l/min. For R D 75-150 mm. Outside D 35 mm. G 207 g.



1/2" F. 6x 75° +1x 0°. 30-100 l/min. For R D 100-200 mm. Outside D 40 mm. G 281 g.



3/4" F. 6x 75° +1x 0°. 30-100 l/min. For R D 120-250 mm. Outside D 50 mm. G 567 g.



1" F. 8x 75° +1x 0°. 100-250 l/min. For R D 150-300 mm. Outside D 62 mm. G 1,265 g.

R+M Nr.	D	G
649 120 216 065	065	40
649 120 216 080	080	40
649 120 216 100	100	40
649 120 216 120	120	40
649 120 216 150	150	40
649 120 216 200	200	40

R+M Nr.	D	G
649 120 316 065	065	50
649 120 316 080	080	50
649 120 316 100	100	50
649 120 316 120	120	50
649 120 316 150	150	50
649 120 316 200	200	50

R+M Nr.	D	G
649 120 416 080	080	55
649 120 416 100	100	55
649 120 416 120	120	55
649 120 416 150	150	55
649 120 416 200	200	55
649 120 416 250	250	55

R+M Nr.	D	G
649 120 516 100	100	70
649 120 516 120	120	70
649 120 516 150	150	70
649 120 516 200	200	70
649 120 516 250	250	70
649 120 516 315	315	70

R+M Nr.	D	G
649 120 618 100	100	100
649 120 618 120	120	100
649 120 618 150	150	100
649 120 618 210	210	100
649 120 618 260	260	100
649 120 618 320	320	100