

## Rotating nozzles with drivers

Rotor nozzle driver and rotor nozzles are the perfect combination for drilling through blockages with its rotary forward facing jet. Driven up to the blockage by 6 powerful rear facing hardened stainless steel nozzles the high speed forward facing spinning jet creates a cone shape that has

enough cutting force to blast through roots and scale. It is also ideal for cutting up and shredding tissue and fat deposits



ST-357.1. Max. 250 bar / 100 °C

| R+M Nr.         | D   | ⊕      |
|-----------------|-----|--------|
| 649 140 216 065 | 065 | 1/4" F |
| 649 140 216 085 | 085 | 1/4" F |
| 649 140 216 095 | 095 | 1/4" F |
| 649 140 216 110 | 110 | 1/4" F |
| 649 140 216 120 | 120 | 1/4" F |
| 649 140 216 130 | 130 | 1/4" F |
| 649 140 216 140 | 140 | 1/4" F |

| R+M Nr.         | D   | ⊕      |
|-----------------|-----|--------|
| 649 140 316 100 | 100 | 3/8" F |
| 649 140 316 135 | 135 | 3/8" F |
| 649 140 316 145 | 145 | 3/8" F |
| 649 140 316 160 | 160 | 3/8" F |
| 649 140 316 180 | 180 | 3/8" F |
| 649 140 316 200 | 200 | 3/8" F |
| 649 140 316 235 | 235 | 3/8" F |

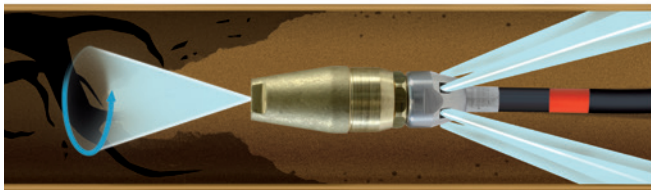


ST-458.1. Max. 400 bar / 100 °C

| R+M Nr.         | D   | ⊕      |
|-----------------|-----|--------|
| 649 160 316 125 | 125 | 3/8" F |
| 649 160 316 145 | 145 | 3/8" F |
| 649 160 316 160 | 160 | 3/8" F |
| 649 160 316 180 | 180 | 3/8" F |
| 649 160 316 200 | 200 | 3/8" F |
| 649 160 316 235 | 235 | 3/8" F |
| 649 160 316 250 | 250 | 3/8" F |

| R+M Nr.         | D   | ⊕      |
|-----------------|-----|--------|
| 649 160 416 150 | 150 | 1/2" F |
| 649 160 416 170 | 170 | 1/2" F |
| 649 160 416 195 | 195 | 1/2" F |
| 649 160 416 215 | 215 | 1/2" F |
| 649 160 416 240 | 240 | 1/2" F |
| 649 160 416 275 | 275 | 1/2" F |
| 649 160 416 300 | 300 | 1/2" F |

### Functional principle



### Driver for rotating nozzles



Hardened stainless steel. 6 M5 threads for nozzle inserts (see table below)

| R+M Nr.     | ⊕      | ⊖      | for           | P       |
|-------------|--------|--------|---------------|---------|
| 040 075 200 | 1/4" F | 1/4" M | ST-357/ST-456 | 350 bar |
| 040 075 205 | 3/8" F | 1/4" M | ST-357/ST-456 | 350 bar |
| 040 075 210 | 3/8" F | 1/4" M | ST-458/ST-559 | 500 bar |
| 040 075 215 | 1/2" F | 1/4" M | ST-458/ST-559 | 500 bar |

### Nozzle Inserts



Full jet. 500 bar.  
Hex for allen key 2.5 mm.  
Hardened stainless steel

| R+M Nr.     | TYP | hole-∅  | nozzle size |
|-------------|-----|---------|-------------|
| 040 075 000 | M5  | plug    | 0           |
| 040 075 005 | M5  | 0.50 mm | 0066        |
| 040 075 006 | M5  | 0.60 mm | 0085        |
| 040 075 007 | M5  | 0.70 mm | 0117        |
| 040 075 008 | M5  | 0.75 mm | 0133        |
| 040 075 009 | M5  | 0.80 mm | 0161        |
| 040 075 010 | M5  | 1.00 mm | 0237        |
| 040 075 012 | M5  | 1.10 mm | 0293        |
| 040 075 015 | M5  | 1.30 mm | 0458        |
| 040 075 020 | M5  | 1.90 mm | 0885        |

### Nozzle configuration

Nozzle inserts for sewer cleaning nozzles and nozzle driver have to be installed **symmetrically**.

