

**Small plough jet nozzle**

For 2 fan jets 1/4" M NPT



Fitted with two rear facing fan jets the small plough jet nozzle is great for desilting drains and sewers. The heavy forged brass construction keeps the jet firmly planted in the base of the pipe where the silt deposits collect and blasts them back towards the manhole.

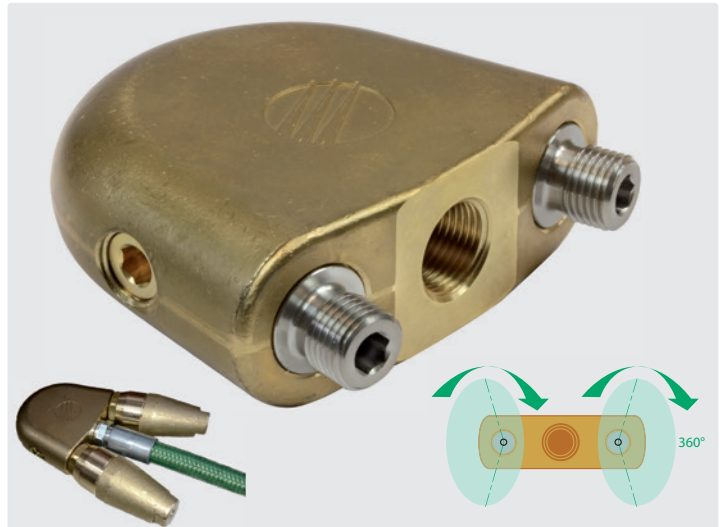
Width approx. 72 mm. Weight 1.5 kg.

Max. 420 bar / 150° C / 80 l/min.

1/4"-nozzles need to be assembled under 45° to achieve best cleaning results. Select nozzle size according to pressure and flow rate of the machine.

|             |        |                |
|-------------|--------|----------------|
| R+M Nr.     |        |                |
| 010 000 399 | 1/2" F | 2 x 1/4" F NPT |

For 2 ST-357 rotating nozzles



Fitted with two rear facing ST-357 rotating nozzles the small plough jet nozzle is the ideal solution for desilting drains and sewers.

The heavy forged brass construction keeps the jet firmly planted in the base of the pipe where the silt deposits collect and blasts them back towards the manhole.

Width approx. 88 mm. Weight 2.5 kg.

Max. 350 bar / 90° C / 80 l/min.

Select rotor nozzle size symmetric according to pressure and flow rate of the machine.

|             |        |            |
|-------------|--------|------------|
| R+M Nr.     |        |            |
| 200 049 410 | 3/8" F | 2 x 1/4" M |

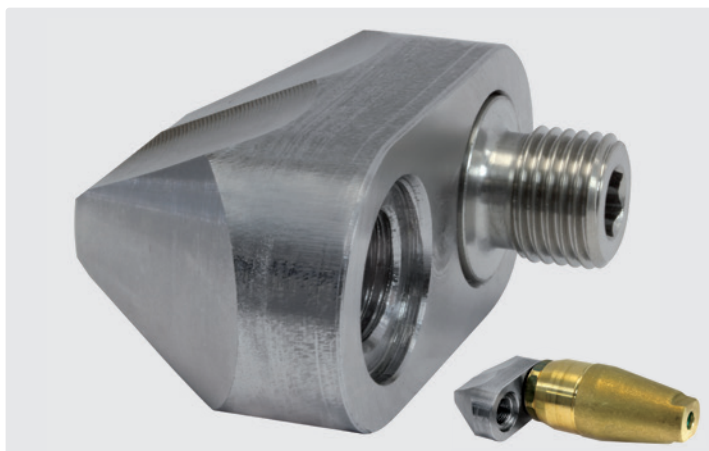
Our rotating nozzles are on page 276.

**Rotating nozzle adaptor**

Designed for connecting the ST-357 rotating nozzle to a sewer cleaning hose. Hardened stainless steel body with extra sharp edges.

Max. 400 bar

For ST-357 rotating nozzle



|             |        |        |
|-------------|--------|--------|
| R+M Nr.     |        |        |
| 200 049 405 | 1/4" F | 1/4" M |

**Possible jet configurations**

