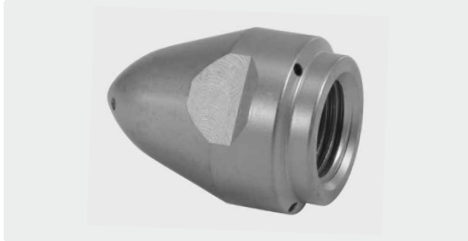


ST-49 nozzles for sewer cleaning

Sewer cleaning nozzles with female thread



Outside \varnothing 22 mm.
Hardened stainless steel.
Max. 500 bar / 35 l/min.

R+M Nr.		\varnothing	\leftrightarrow	\boxtimes
120 460 385	1/4" F		070	



Outside \varnothing 22 mm.
Hardened stainless steel.
Max. 500 bar / 32 l/min.

R+M Nr.		\varnothing	\leftrightarrow	\boxtimes
120 163 392	1/4" F		065	



Outside \varnothing 25 mm.
Hardened stainless steel.
Max. 500 bar / 32 l/min.

R+M Nr.		\varnothing	\leftrightarrow	\boxtimes
120 163 393	3/8" F		065	

Grease ball



8 rear jets 0.6 mm for extreme thrust and highest wall coverage of the pipe. Designed for the ability to clean grease off the sidewall of pipes but has proven to be great on root chokes, too. Completely spherical shape. Nozzle drilling as stepped bore for best protection against mechanical impact.
Hardened stainless steel.
Max. 500 bar

R+M Nr.		\varnothing	\leftrightarrow	\boxtimes
120 000 860	1/4" F		080	

Root rat



Equipped with 3 rear jets (30°) for maximum thrust and 3 additional nozzles (45°) right behind its nose for better cleaning results and wall coverage the nozzle has proven to be ideal on root chokes.
Hardened stainless steel.
Max. 500 bar / 30 l/min

R+M Nr.		\varnothing	\leftrightarrow	\boxtimes
120 155 672	1/4" F		060	

Mini-nozzles for sewer cleaning

Heat exchangers in thermal power stations or conveyor pipes in the food industry are often sewers of 10 to 12 mm in diameter. In order to clean them effectively from the inside a device for sewer cleaning with small diameters and high pressures is required.



Crimp nipple.
DN 4.
M7 M.
Stainless steel.
Max. 500 bar

R+M Nr.	\leftrightarrow
040 001 946	22



M7 F. 3 rear jets for maximum thrust and powerful cleaning impact.
Outside \varnothing 9.8 mm.
Stainless steel.
Max. 500 bar

R+M Nr.	\varnothing
120 000 380	030
120 001 380	065



M7 F. 3 rear jets for maximum thrust. Additional 3 side jets (90°) for powerful cleaning impact and optimal wall coverage.
Outside \varnothing 9.8 mm. Stainless steel.
Max. 500 bar

R+M Nr.	\varnothing
120 373 373	065

Symbols \varnothing nozzle inlet \varnothing diameter \leftrightarrow length mm \boxtimes weight