

## Suttner high pressure quick couplings ST-45-250 KW

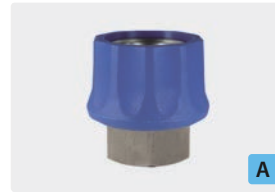
### Couplings and plug ST-45-250 KW



Coupling : M.  
Stainless steel.  
Max. 250 bar / 150 °C



Coupling : F.  
Stainless steel.  
Max. 250 bar / 150 °C



Coupling : F.  
Stainless steel.  
Max. 250 bar / 150 °C



Plug : F.  
Hardened stainless steel.  
Max. 250 bar / 150 °C

⊙	DN
1/4"	10
3/8"	10
1/2"	10
M22	10

R+M Nr.	⊓
200 045 595	49 mm

R+M Nr.	⊓
200 045 570	41 mm
200 045 560	41 mm
200 045 550	41 mm
200 045 575	41 mm

R+M Nr.	⊓
200 045 565	43 mm
200 045 555	43 mm

R+M Nr.	⊓
040 005 482	38 mm



Plug : M.  
Stainless steel.  
Max. 250 bar / 150 °C



Plug : M.  
Hardened stainless steel.  
Max. 250 bar / 150 °C



Coupling : F.  
Nickel-plated brass.  
Max. 250 bar / 150 °C



Coupling : F.  
Nickel-plated brass.  
Max. 250 bar / 150 °C

⊙	DN
1/4"	10
3/8"	10
1/2"	10

R+M Nr.	⊓
557 206	44 mm

R+M Nr.	⊓
040 005 669	42 mm

R+M Nr.	⊓
200 045 510	41 mm

R+M Nr.	⊓
200 045 505	43 mm



Plug : F.  
Zinc-plated steel.  
Max. 250 bar / 150 °C



Plug : F.  
Stainless steel.  
Max. 250 bar / 150 °C



Plug : F.  
Hardened stainless steel.  
Max. 250 bar / 150 °C



O-ring. 20x2.5. EPDM

R+M Nr.	VPE
792 025 100	100



O-ring. 18x2.5. EPDM

R+M Nr.	VPE
791 825 100	100

⊙	DN
3/8"	10
1/2"	10

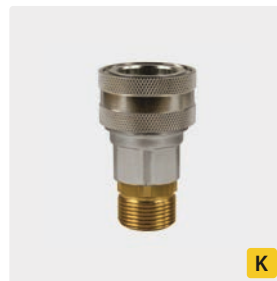
R+M Nr.	⊓
557 204	38 mm

R+M Nr.	⊓
557 209	38 mm
557 29	45 mm

R+M Nr.	⊓
557 209 2	38 mm



Plug : F.  
Zinc-plated steel + brass.  
Max. 250 bar / 150 °C



Coupling : M.  
Nickel-plated brass + brass.  
Max. 250 bar / 150 °C

⊙	DN
M22	10

R+M Nr.	⊓
557 205	73 mm

R+M Nr.	⊓
557 105	63 mm



Seal kit

R+M Nr.	M
557 104 11	EPDM
200 045 460	FKM

Symbols ⊓ height DN nominal diameter ⊙ thread VPE packing unit ∅ diameter TYP type M material