

easyfoam365+

Intake manifold ST-163.1



The choice of perfection



Easy selection
with a twist!



The 4-fold intake manifold ST-163.1 for all easyfoam365+ injectors

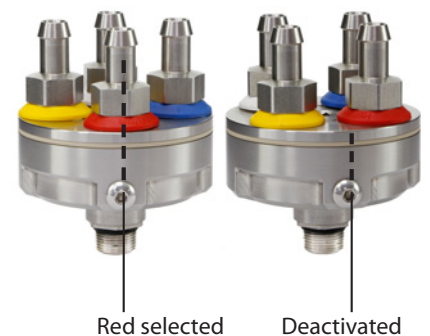
- Material: stainless steel.
- There is no need for changeover times caused by constant changing of suction hoses for media (cleaning agents).
- Individually controllable inlet hose barbs. A noticeable locking system shows that the selected hose barb is optimally positioned and activated.
- 4 sets of dosing nozzles including plugs are supplied, through which the suction volume of the media can be set in suction mode.
- No twisting of the hoses: The control takes place via a twisting part with marking. If the marking is between 2 colored hose barbs, the passage is blocked.
- With various accessories, the ST-163 intake manifold can be mounted on the wall or on a trolley. An adapter for direct mounting on the ST-167 and ST-168 injectors is also available.



4 sets of dosing nozzles included: The plugs can also simply be inserted into the hose barbs.



Mounting accessories can be found on the next page.



Intake manifold ST-163.1



Intake manifold for easyfoam365+ injectors. 4 color-coded suction options. Control by turning the rotating part. Including O-ring and 4 sets of dosing nozzles

R+M Nr.	D
200 163 185	4 sets of dosing nozzles

rm-suttner.com

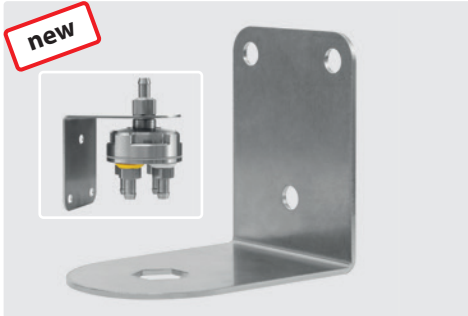
Vers. 11/21

Intake manifold ST-163.1



The choice of perfection

Intake manifold ST-163.1 accessories



Stainless steel wall bracket for intake manifold

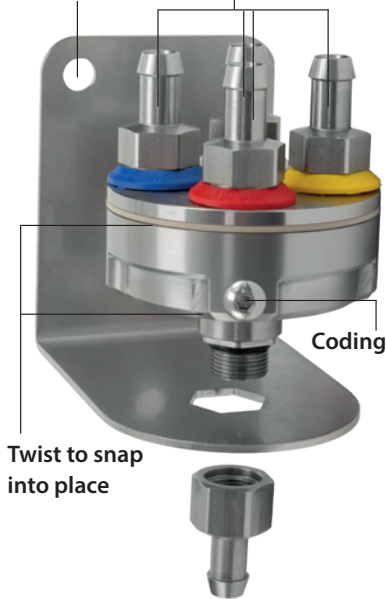
R+M Nr.
040 004 013



Stainless steel hose barb for intake manifold. Also for mounting on the wall bracket

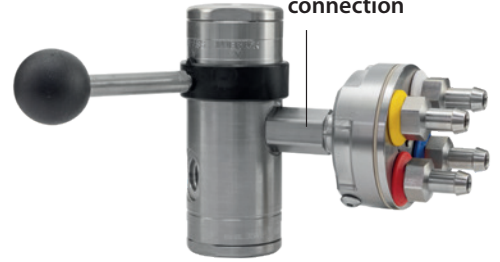
R+M Nr.
040 003 590

3 holes, 8.5 mm for fastening
9 mm restrictions color-coded (HACCP)



Easy to mount on the wall or on the trolley: The intake manifold can be attached to the wall bracket with the optionally available stainless steel hose barb.

Adapter for direct connection



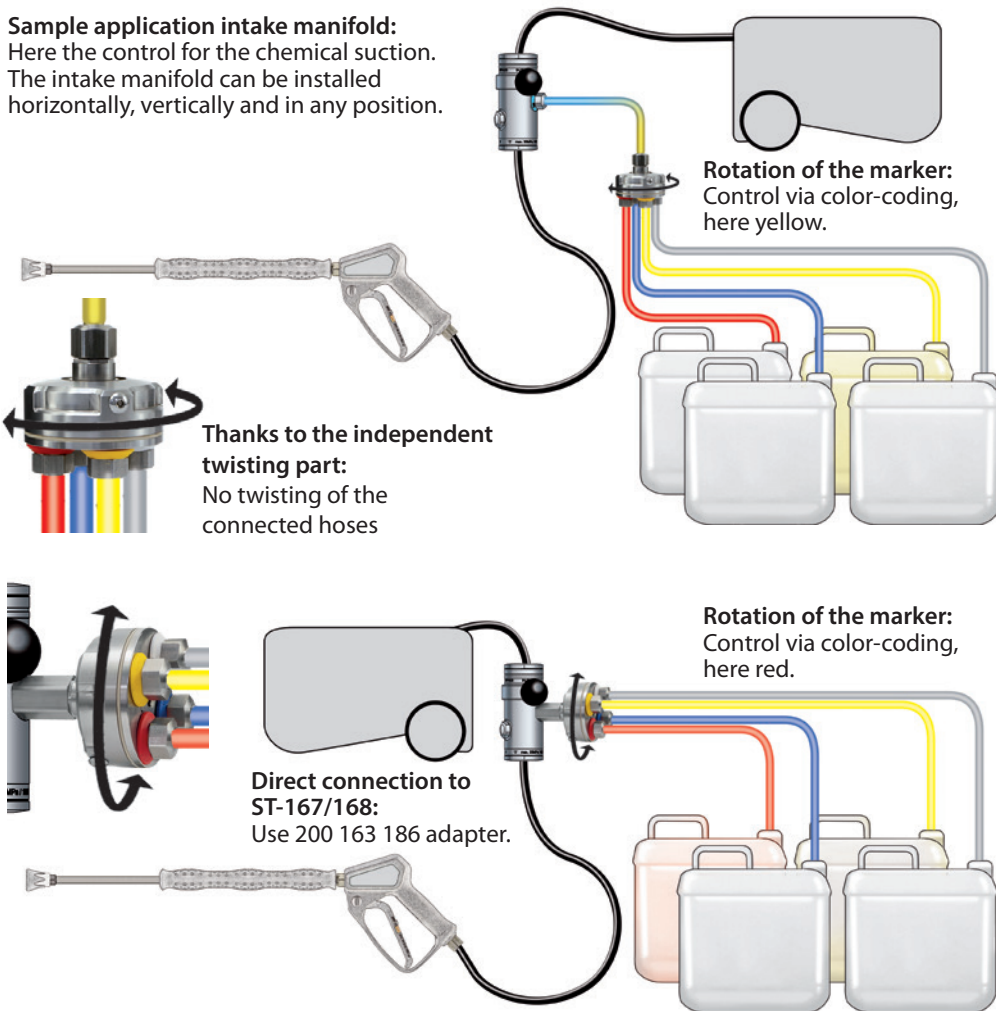
Directly connected with the adapter: The easyfoam365+ injectors ST-167 and ST-168 offer the option of direct connection.



Stainless steel adapter for intake manifold. Incl. O-ring. For mounting on the easyfoam365+ injectors ST-167 / ST-168

R+M Nr.
200 163 186

Sample application intake manifold: Here the control for the chemical suction. The intake manifold can be installed horizontally, vertically and in any position.



Flexible positioning: the combination can be used in all directions. Horizontal mounting is also possible.