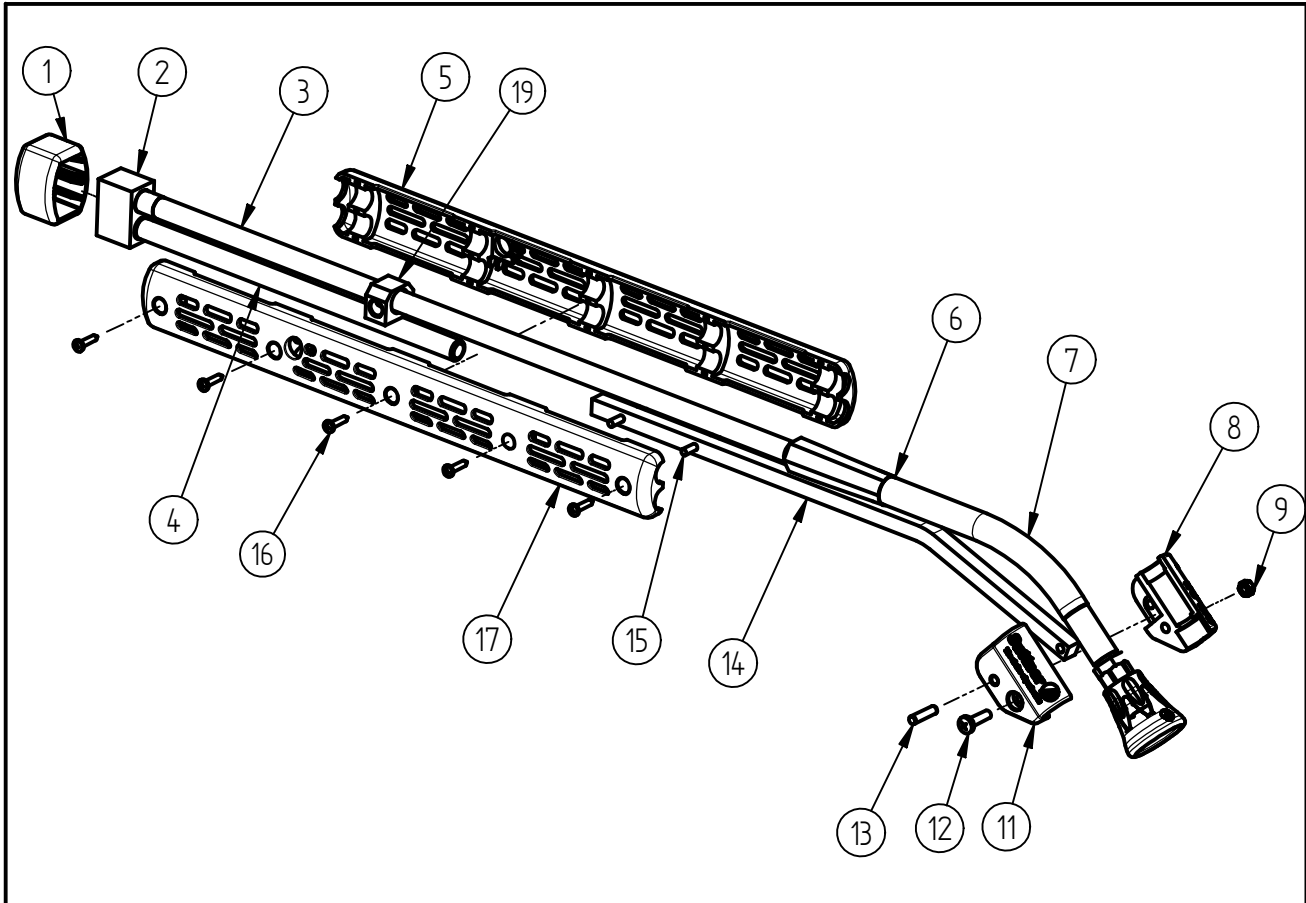


Spare Parts  
Lance "Push and Pull"  
Item-No. 20 0085 810



Pos.	Item-No.	Description	Pos.	Item-No.	Description
1	02 0002 770	Cover housing	16	04 0000 051	Screw 3.5x16
2	01 0002 200	Housing	17	02 0002 750	Semi casing (1)
3	07 0005 008	Stainless steel lance	18	20 0010 730	Nozzle protection grey - black
4	07 0000 435	Lance 250mm	19	01 0005 030	Bracket
5	02 0002 760	Semi casing (2)			
6	02 0007 530	Shrinkdown plastic tube			
7	20 0085 300	Hose			
8	02 0007 500	Hose holder left			
9	04 0002 865	Nut M5			
11	02 0007 510	Hose holder right			
12	04 0002 870	Screw M5x16			
13	04 0002 880	Straight pin 5x20			
14	03 0000 220	Aluminium stick			
15	04 0002 885	Straight pin 4x30			

## Repair-Kits

Pos.	Item-No.	Description	Pos.	Item-No.	Description
.					