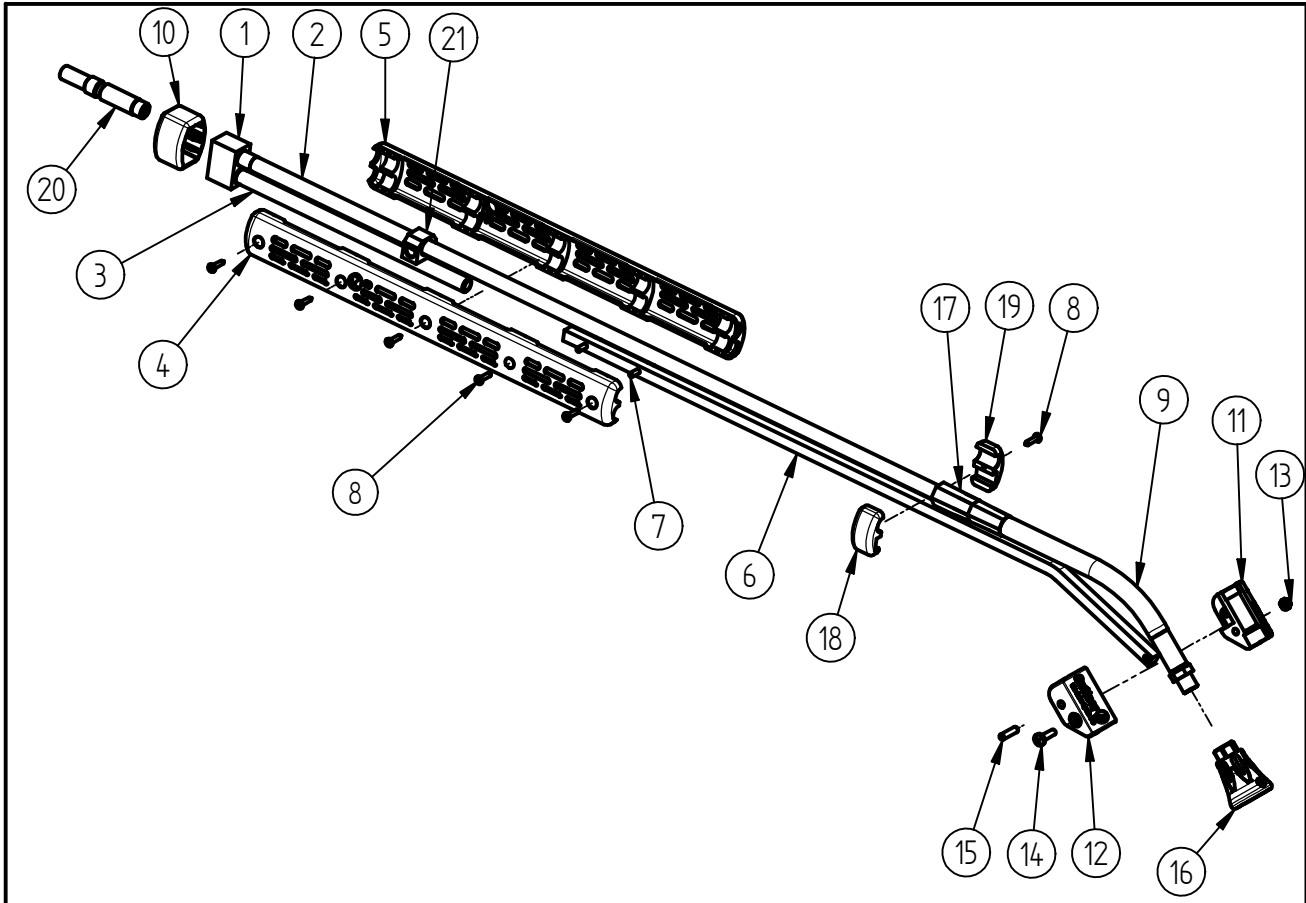


Spare Parts
Lance "Push and Pull"
Item-No. 20 0085 500



Pos.	Item-No.	Description	Pos.	Item-No.	Description
1	01 0002 200	Housing	15	04 0002 880	Straight pin 5x20
2	07 0000 110	Lance 760mm	16	20 0010 700	Nozzle protection ST-10 black/black
3	07 0000 440	Lance 250mm	17	02 0007 530	Shrinkdown plastic tube
4	02 0002 750	Semi casing (1)	18	02 0002 780	Clamp (1)
5	02 0002 760	Semi casing (2)	19	02 0002 790	Clamp (2)
6	03 0000 280	Aluminium bar	20	04 0001 256	Quick coupling plug male
7	04 0002 885	Straight pin 4x30	21	01 0005 030	Bracket
8	04 0000 051	Screw 3.5x16			
9	20 0085 300	Hose			
10	02 0002 770	Cover housing			
11	02 0007 500	Hose holder left			
12	02 0007 510	Hose holder right			
13	04 0002 865	Nut M5			
14	04 0002 870	Screw M5x16			

Repair-Kits

Pos.	Item-No.	Description	Pos.	Item-No.	Description
.					