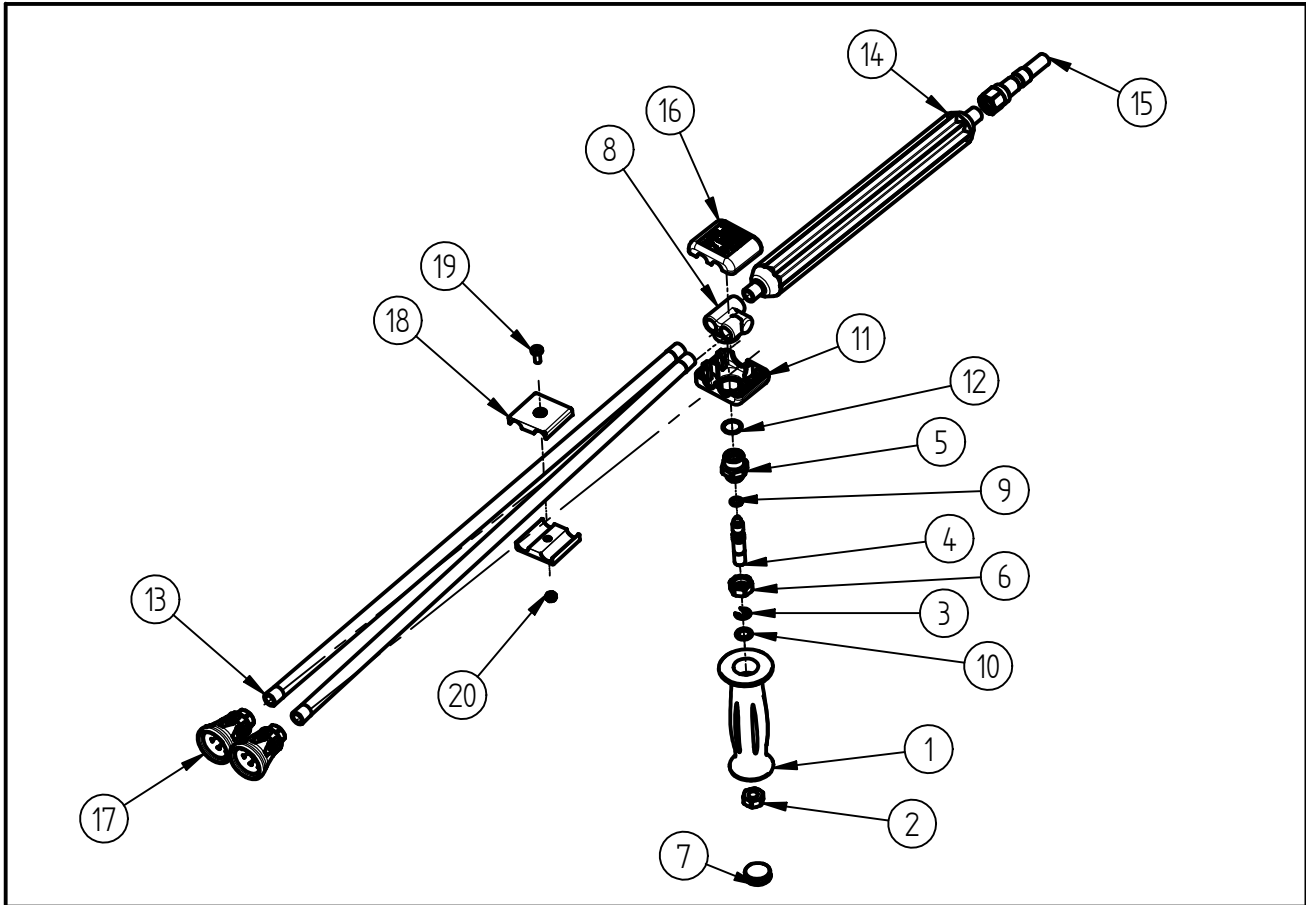


Spare Parts
Double Lance ST-54
 Item-No. 20 0054 630



| Pos. | Item-No. | Description | Pos. | Item-No. | Description |
|------|-------------|-----------------------------|------|-------------|--------------------------------|
| 1 | 02 0005 070 | Handle | 15 | 04 0001 255 | plug nipple |
| 2 | 04 0001 380 | Nut M10 | 16 | 02 0005 060 | Valve cover lower part |
| 3 | 04 0000 205 | Locking ring | 17 | 20 0010 730 | Nozzle protection grey - black |
| 4 | 04 0002 295 | Adjustment rod | 18 | 02 0005 081 | Plastic clamp |
| 5 | 01 0002 510 | Nipple | 19 | 04 0000 175 | Screw M5 |
| 6 | 01 0002 562 | Stop nut | 20 | 04 0000 380 | Nut M5 |
| 7 | 02 0000 125 | Cap | | | |
| 8 | 01 0002 500 | Housing brass | | | |
| 9 | 05 0000 400 | O- ring 7,65 x 1,78 | | | |
| 10 | 01 0000 920 | Plain washer, brass | | | |
| 11 | 02 00050 50 | Valve cover upper part | | | |
| 12 | 05 0000 940 | O-ring 15 x 1 | | | |
| 13 | 07 0006 008 | nozzle pipe | | | |
| 14 | 07 0003 229 | spray lance, insul. 320/300 | | | |

Repair-Kits

| Pos. | Item-No. | Description | Pos. | Item-No. | Description |
|------|----------|-------------|------|----------|-------------|
| . | | | | | |