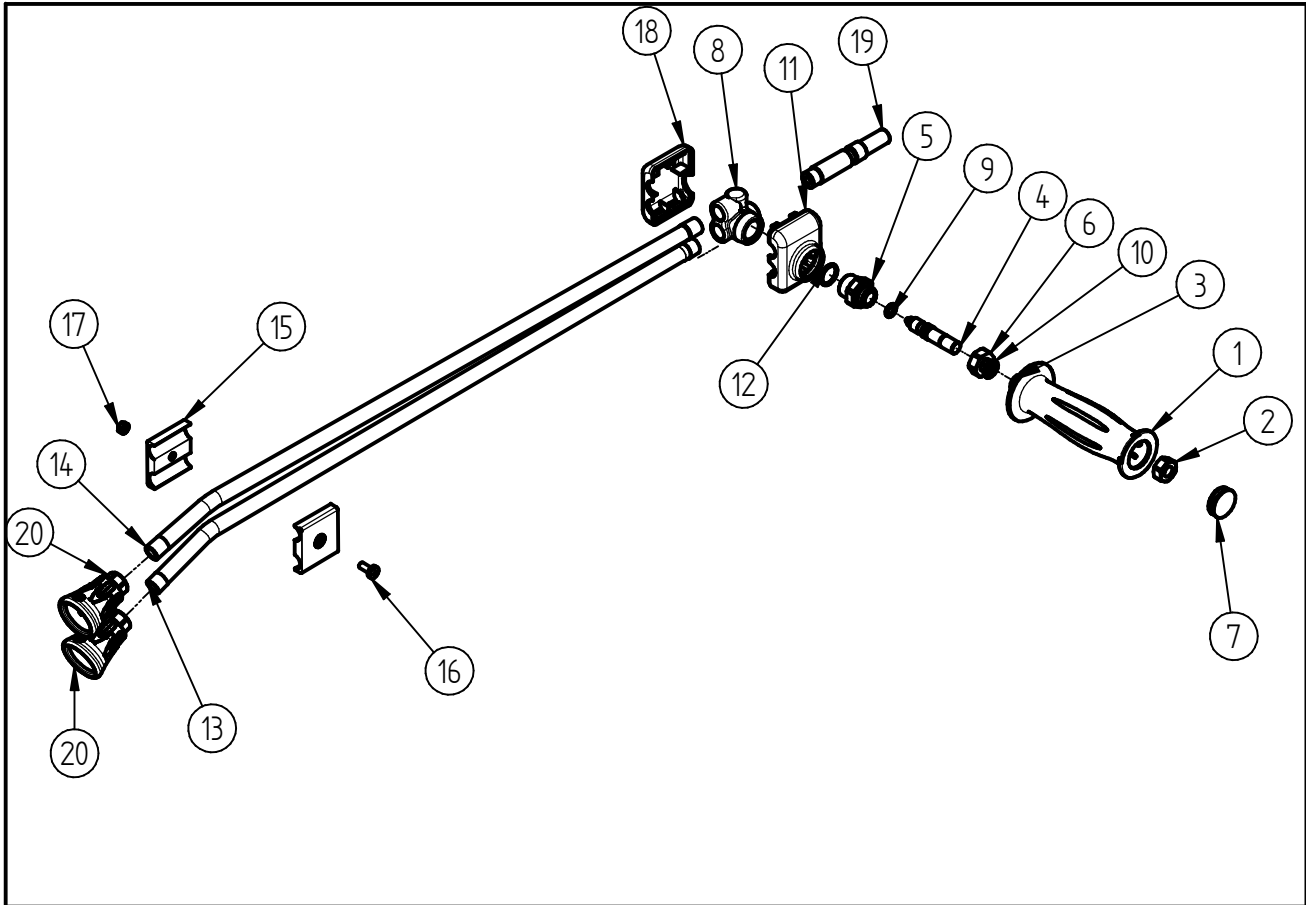


Spare Parts  
**Double Lance ST-45**  
 Item-No. 20 0054 511



Pos.	Item-No.	Description	Pos.	Item-No.	Description
1	02 0005 070	Handle	14	07 0000 040	Nozzle Pipe
2	04 0001 380	Nut M10	15	02 0005 081	Plastic clamp
3	04 0000 205	Locking ring	16	04 0000 170	Screw M5
4	04 0002 295	Adjustment rod	17	04 0000 160	Nut M5
5	01 0002 510	Nipple	18	02 0005 060	Valve cover lower part
6	01 0002 562	Stop nut	19	04 0001 256	Quick coupling plug male
7	02 0000 125	Cap	20	20 0010 500	Nozzle protection ST-10 black-black
8	01 0002 500	Housing brass			
9	05 0000 400	O- ring 7,65 x 1,78			
10	01 0000 920	Plain washer, brass			
11	02 00050 50	Valve cover upper part			
12	05 0000 940	O-ring 15 x 1			
13	07 0000 040	Lance 600 mm			

### Repair-Kits

Pos.	Item-No.	Description	Pos.	Item-No.	Description
.					