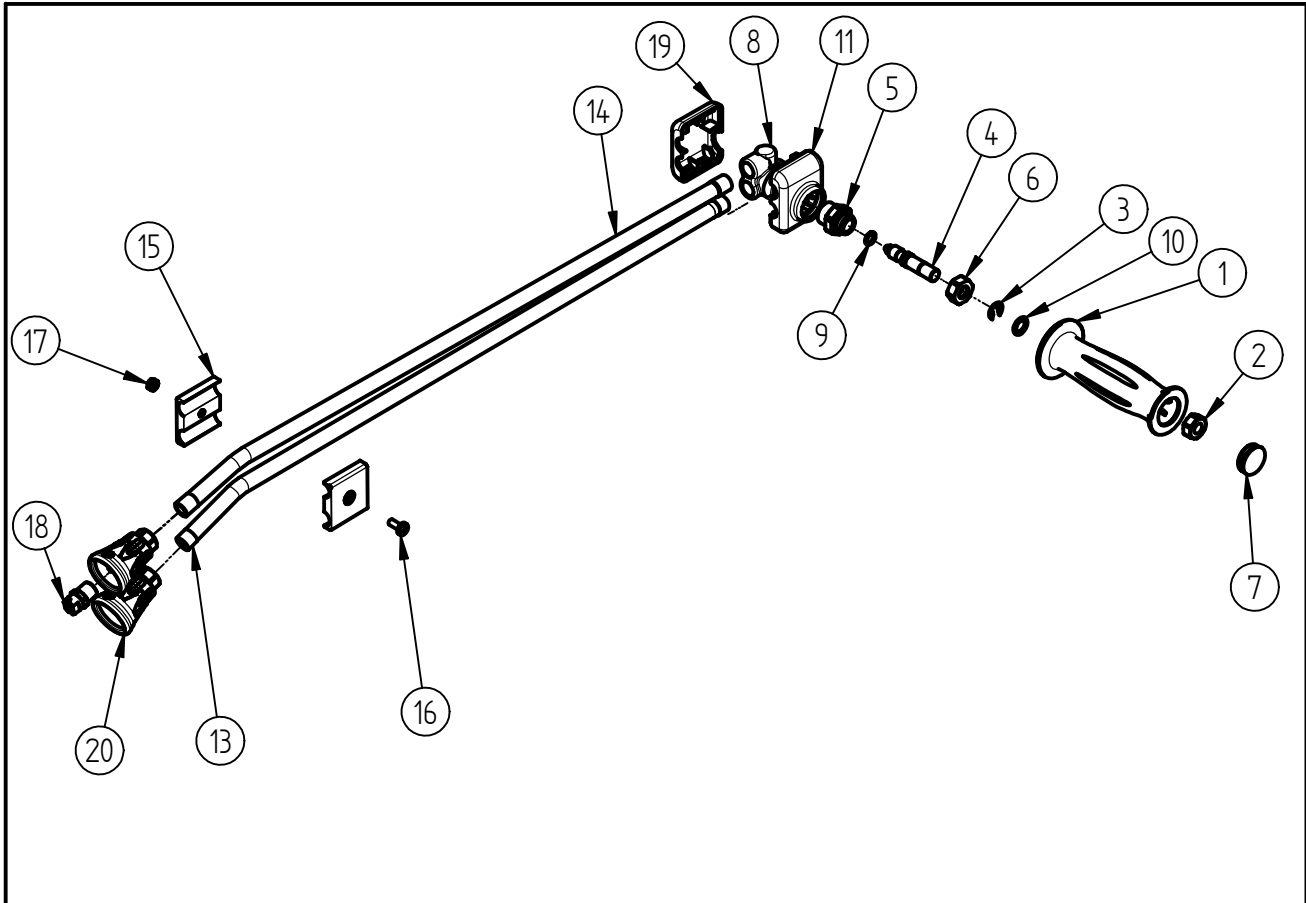


Spare Parts
Double Lance ST-45
Item-No. 20 0054 510



Pos.	Item-No.	Description	Pos.	Item-No.	Description
1	02 0005 070	Handle	15	02 0005 081	Plastic clamp
2	04 0001 380	Nut M10	16	04 0000 170	Screw M5
3	04 0000 205	Locking ring	17	04 0000 160	Nut M5
4	04 0002 295	Adjustment rod	18	12 0253 002	Low pressure nozzle 65.30
5	01 0002 510	Nipple	19	02 0005 060	Valve cover lower part
6	01 0002 562	Stop nut	20	20 0010 500	Nozzle protection ST-10 black-black
7	02 0000 125	Cap			
8	01 0002 500	Housing brass			
9	05 0000 400	O- ring 7,65 x 1,78			
10	01 0000 920	Plain washer, brass			
11	02 00050 50	Valve cover upper part			
12*	05 0000 940	O-ring 15 x 1			
13	07 0000 040	lance 600mm			
14	07 0000 040	Nozzle Pipe			

Repair-Kits

Pos.	Item-No.	Description	Pos.	Item-No.	Description
.					