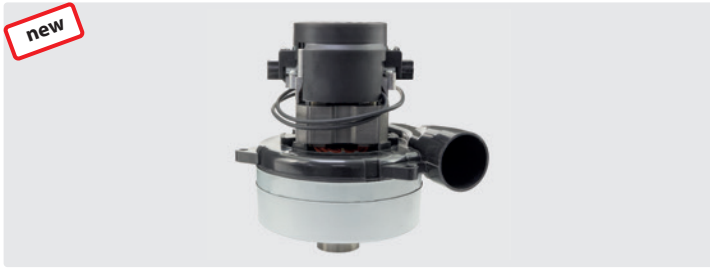


Vacuum motors

new



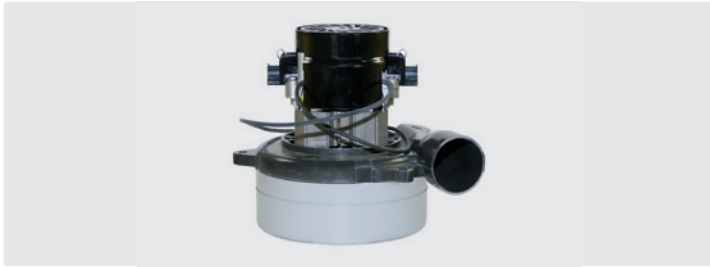
2 stage with waste air pipe and base.
Voltage: 24 V. Cable pre-installed

R+M Nr.	TYP	W	I	Ti	∅	VPE
262 043 213	universal	430	170	69	144	1
262 043 213 006	universal	430	170	69	144	6



3 stage with waste air pipe. Cable pre-installed.
262 064 113 : 24/50 Hz. 262 074 113 : 36/50 Hz

R+M Nr.	TYP	W	I	Ti	∅	VPE
262 064 113	116 515-13	640	199	91	144	1
262 074 113	116 513-13	740	199	91	144	1



2 stage with waste air pipe. 24 V.
Cable pre-installed

R+M Nr.	TYP	W	I	Ti	∅	VPE
262 043 112	116 157-00	430	165	69	145	1
262 043 113	universal	430	165	69	145	1
262 043 113 006	universal	430	165	69	145	6



2 stage with waste air pipe. 24 V.
Cable pre-installed

R+M Nr.	TYP	W	I	Ti	∅	VPE
262 050 112	63265R	500	168	72	144	1



1 stage. 230 V / 50 Hz.
Cable pre-installed

R+M Nr.	TYP	W	I	Ti	∅	VPE
262 120 104	402-6	1,200	128	42	134	1



1 stage. 230 V / 50 Hz.
Cable type 1 enclosed

R+M Nr.	TYP	W	I	Ti	∅	VPE
262 150 104	404-2	1,500	128	42	134	1



1 stage. 230 V / 50 Hz.
Without cable, (Cable type 1 optional)

R+M Nr.	TYP	W	I	Ti	∅	VPE
262 120 703	063700003 / 6110930052	1,200	136	46	143	1
262 120 701	064200001 / 6110820039	1,200	131	45	127	1