

Mosmatic high RPM swivels DY-Series / WDRS

Axle and housing stainless steel. Triple ball bearing system. Maintenance-free. DN 6 for 3/8". DN 13 for 1/2". DN 38 for 1.1/2"



DYCI. Triple ball bearing system. Field of application: especially designed for high revolutions per minute and self-rotating applications. Max. 350 bar / 2,000 r.p.m. / 120 °C

R+M Nr.	⊕	⊖	↔
108 550 03	1/4" F	3/8" M	95
108 551 03	3/8" F	3/8" M	95



DYCI. Triple ball bearing system. Field of application: especially designed for high revolutions per minute and self-rotating applications. Max. 350 bar / 2,000 r.p.m. / 120 °C

R+M Nr.	⊕	⊖	↔
108 552 53	M22	3/8" M	95



DYDI. Triple ball bearing system. Field of application: especially designed for high revolutions per minute and self-rotating applications. Max. 500 bar / 2,000 r.p.m. / 120 °C

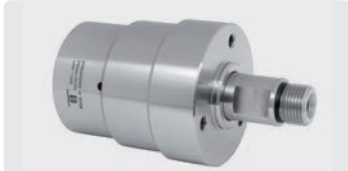
R+M Nr.	⊕	⊖	↔
108 552 63	M22	3/8" M	95



WDRS. Double ball bearing system. Field of application: especially designed for high flow rates, e.g. automatic car wash. Max. 200 bar / 60 - 150 r.p.m. / 80 °C

R+M Nr.	⊕	⊖	↔
108 412 11	1/2" F	1/2" M	110
108 415 11	1.1/2" F	1.1/2" M	150

Axle and housing stainless steel. Quadruple ball bearing system. DN 6. Maintenance-free. Field of application: especially designed for high revolutions per minute and self-rotating applications. Max. 2,000 r.p.m. / 120 °C



DYT. Max. 350 bar

R+M Nr.	⊕	⊖	↔
108 590 03	1/4" F	3/8" M	107
108 591 01	3/8" F	1/4" M	109
108 591 03	3/8" F	3/8" M	109



DYT 90°. Max. 350 bar

R+M Nr.	⊕	⊖	↔
108 593 03	1/4" F	3/8" M	109
108 594 03	3/8" F	3/8" M	110



DYU. Max. 500 bar

R+M Nr.	⊕	⊖	↔
108 591 13	3/8" F	3/8" M	109



DYU 90°. Max. 500 bar

R+M Nr.	⊕	⊖	↔
108 594 13	3/8" F	3/8" M	110

R+M swivels



3/4" F : 3/4" M. DN 19. Housing and axle stainless steel. Max. 200 bar / 90 °C

R+M Nr.	ⓘ
750 400 1	80 mm



Repair kit swivel 750 400 1

R+M Nr.
750 400 2



3/8" M : 3/8" F. Brass. Max. 220 bar / 90 °C

R+M Nr.	ⓘ
562 50	39 mm



1/4" F : 3/8" M. DN 6. Housing and axle stainless steel. Max. 600 bar / 90 °C

R+M Nr.	ⓘ
750 280 0	59 mm



Seal kit swivel 750 280 0

R+M Nr.
750 200 2



3/8" M : 1/4" F. Brass. Max. 220 bar / 90 °C

R+M Nr.	ⓘ
562 60	39 mm