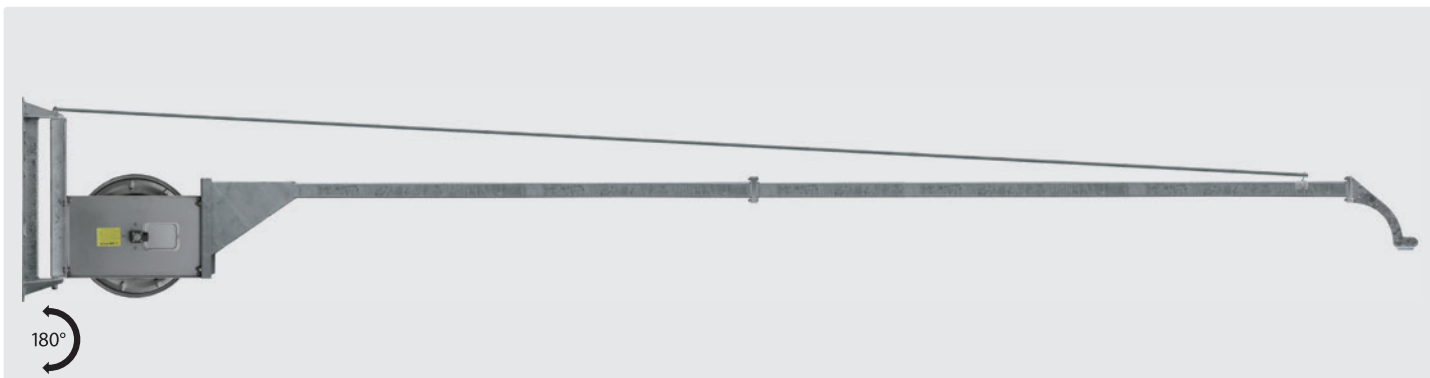


R+M car wash booms

R+M booms with hose reel ST 14



Zinc-plated steel. Extension with hose reel ST 14 made out of stainless steel.

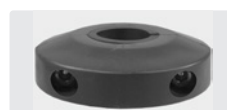
Hose capacity outer \varnothing = hose \varnothing 15 mm · 20 mm = 12 m.

Without high pressure hose. Max. 300 bar.

Attention: Delivery time of approx. 2 weeks!

| R+M Nr. | \varnothing | \odot | \ominus | \boxplus |
|---------|---------------|---------|-----------|------------|
| 109 825 | 2,570 mm | 3/8" F | 3/8" F | 45.0 kg |
| 109 835 | 3,570 mm | 3/8" F | 3/8" F | 50.0 kg |
| 109 845 | 4,570 mm | 3/8" F | 3/8" F | 54.0 kg |

Hose stopper



Hose stop with six exchangeable inserts.

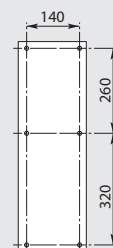
Hose \varnothing 10 - 34 mm

R+M Nr.

741 03

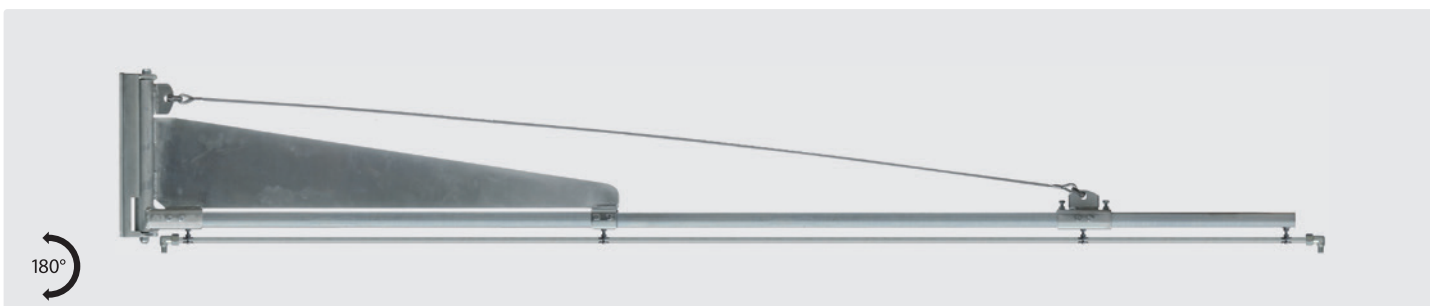
R+M Nr.

741 033



R+M car wash booms

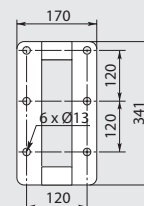
R+M booms with pressure pipe



Zinc-plated steel. Pipe zinc-plated steel. Maintenance-free.

Max. 400 bar

| R+M Nr. | \varnothing | \odot | \ominus | \boxplus |
|---------|---------------|---------|-----------|------------|
| 109 10 | 2,000 mm | 1/4" M | 1/4" M | 12.0 kg |
| 109 20 | 2,500 mm | 1/4" M | 1/4" M | 14.0 kg |
| 109 30 | 3,000 mm | 1/4" M | 1/4" M | 15.0 kg |
| 109 40 | 3,500 mm | 1/4" M | 1/4" M | 17.0 kg |



Symbols \varnothing length \odot inlet \ominus outlet \boxplus weight \varnothing diameter shipment by truck