

Mosmatic car wash ceiling booms

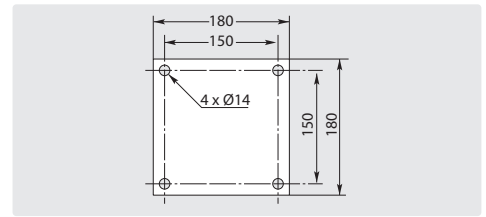
Mosmatic Ceiling boom/ Wall boom extension



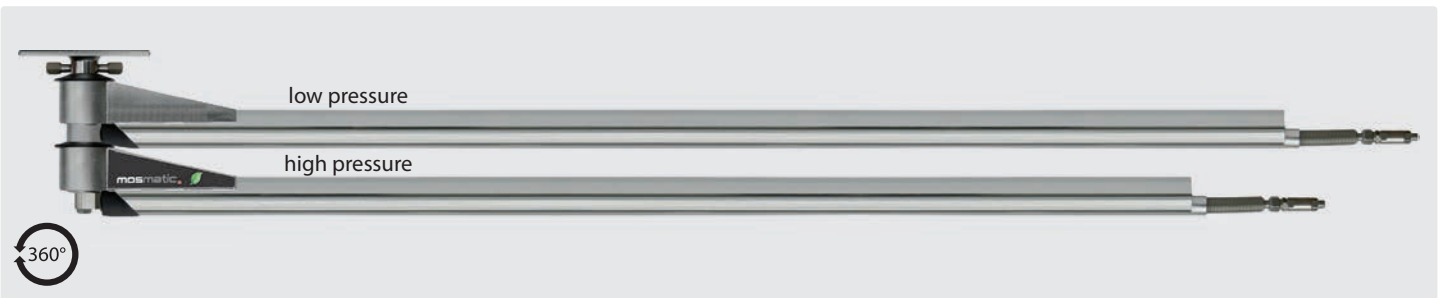
Stainless steel. This classic, straight ceiling boom is used in numerous industrial areas, such as truck washing, food, manufacturing or assembly. A real all-rounder that can be used in many ways. For the use of liquids, gases or air. 1/2" throughout. Max. 275 bar / 120 °C.

Attention: Delivery time of approx. 2 weeks!

R+M Nr.	↔	⌚	⌚	⌚
108 664 11	1,450 mm	1/2" F	1/2" M	10,2 kg



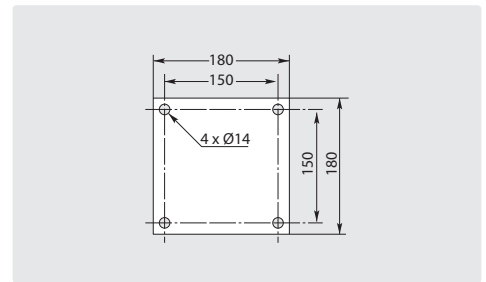
Mosmatic double ceiling booms with insulated high pressure hoses



Stainless steel. Ready for installation with three integrated swivels, professional high pressure hose with spring and integrated hose bend restrictors. Axle 2-ball bearings and permanently lubricated. Especially developed for 2 different application mediums. Max. 275 bar / 90 °C.

Attention: Delivery time of approx. 2 weeks!

R+M Nr.	↔	⌚	⌚	⌚
108 674 23	1,750 mm / 1,900 mm	1/4" F	1/4" M	19.2 kg
108 674 33	1,900 mm / 2,050 mm	1/4" F	1/4" M	19.5 kg
108 674 43	2,050 mm / 2,250 mm	1/4" F	1/4" M	19.8 kg
108 674 53	2,250 mm / 2,500 mm	1/4" F	1/4" M	21.1 kg



Mosmatic car wash ceiling boom-Z with insulated high pressure hose



Stainless steel. Ready for installation with two integrated swivels. Especially designed for using two booms side by side. Insulated high pressure hose. Max. 275 bar / 90 °C.

Attention: Delivery time of approx. 2 weeks!

R+M Nr.	↔	⌚	⌚	⌚
108 650 11	1,550 mm	1/4" F	1/4" M	9,9 kg

