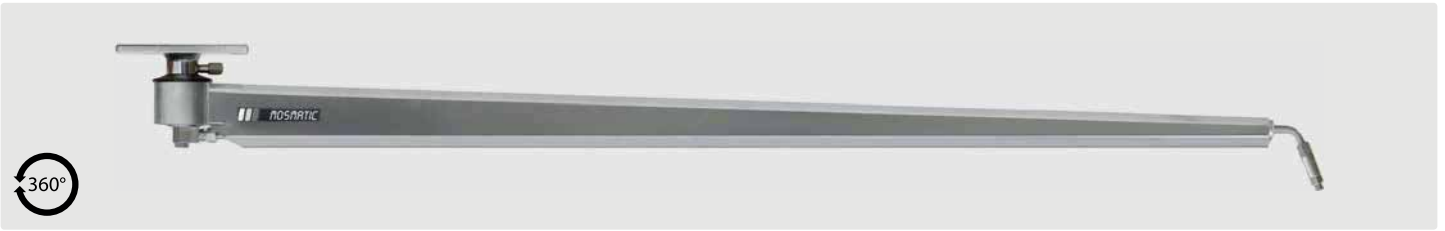
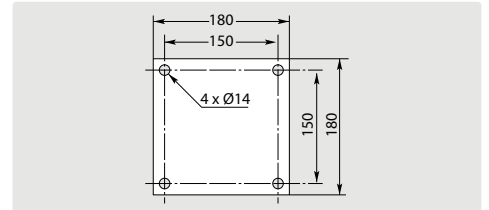


Mosmatic car wash ceiling booms

Mosmatic standard



Stainless steel. Ceiling boom with ball bearing swivels. Maintenance-free. Connection with swivel. Max. 275 bar / 90 °C

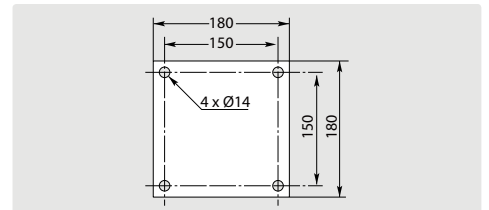


R+M Nr.	↔	⊕	⊖	⊞
109 717	1,750 mm	1/4" F	1/4" M	10.5 kg

Mosmatic car wash ceiling boom-Z with insulated high pressure hose



Stainless steel. Ready for installation with two integrated swivels. Especially designed for using two booms side by side. Insulated high pressure hose. Max. 275 bar / 90 °C. **Attention: Delivery time of approx. 2 weeks!**



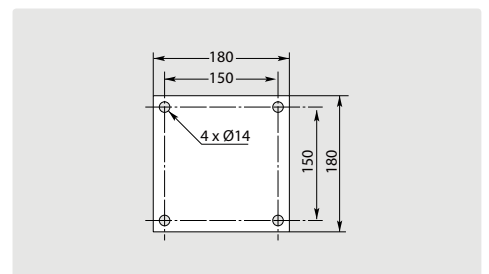
R+M Nr.	↔	⊕	⊖	⊞
108 650 11	1,550 mm	1/4" F	1/4" M	9.9 kg

Mosmatic double ceiling booms with insulated high pressure hoses



Stainless steel. Ready for installation with three integrated swivels, professional high pressure hose with spring and integrated hose bend restrictors. Axle 2-ball bearings and permanently lubricated. Especially developed for 2 different application mediums. Max. 275 bar / 90 °C.

Attention: Delivery time of approx. 2 weeks!



R+M Nr.	↔	⊕	⊖	⊞
108 674 23	1,750 mm / 1,900 mm	1/4" F	1/4" M	19.2 kg
108 674 33	1,900 mm / 2,050 mm	1/4" F	1/4" M	19.5 kg
108 674 43	2,050 mm / 2,250 mm	1/4" F	1/4" M	19.8 kg
108 674 53	2,250 mm / 2,500 mm	1/4" F	1/4" M	21.1 kg

Symbols ⊕ diameter ⊕ inlet ⊖ outlet ⊞ weight ↔ length