

Accessories for hose reels

Wall swivel brackets ST 14 / ST 20



180° swivel

R+M Nr.	★	(M)
741 00	●	zinc-plated steel
741 01	●	stainless steel *

Wall swivel brackets ST 30 / ST 40



180° swivel

R+M Nr.	★	(M)
741 001	■	zinc-plated steel
741 011	■	stainless steel *

Wall swivel brackets ST 40



180° swivel

R+M Nr.	★	(M)
741 003	▲	zinc-plated steel
741 012	▲	stainless steel *

Counterplates ST14/20/30/40



R+M Nr.	(M)
741 002	stain. steel *

* V2A / AISI 304

Swivels ST-322



3/8" F : 3/8" M. DN 10.
Max. 400 bar / 90 °C

R+M Nr.	(i)
200 322 500	65 mm



1/2" F : 3/8" M. DN 10.
Max. 300 bar / 90 °C

R+M Nr.	(i)
200 322 510	65 mm



1/2" F : 1/2" M. DN 12.
Max. 300 bar / 90 °C

R+M Nr.	(i)
200 322 520	67 mm



1/2" F : 1/2" M. DN 12.
Max. 300 bar / 90 °C

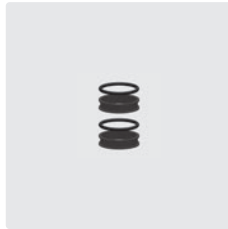
R+M Nr.	(i)
200 322 522	68 mm

ST / SoST



Swivel 200 bar

R+M Nr.	(O)
750 400 1	3/4"



Seal kit swivel 200 bar

R+M Nr.	(TYP)
750 400 2	3/4"

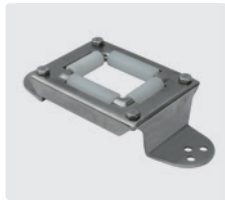
Repair kit ST-322



Repair kit swivels
ST-322

R+M Nr.
200 322 490

Hose guides



Wall hose guide frame.
50 x 37 mm

R+M Nr.
741 06

Locking bracket for elbow swivel joints



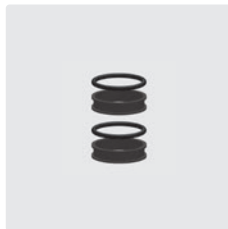
Incl. holder for locking screw

R+M Nr.
741 25



1/4" F : 3/8" M. Housing
and axle stainless steel.
Max. 600 bar / 90 °C

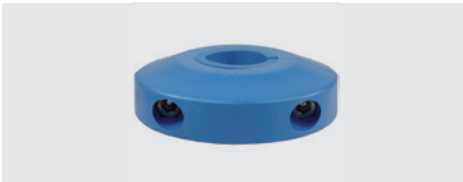
R+M Nr.	(i)
750 280 0	59 mm



Seal kit swivel 750 280 0

R+M Nr.
750 200 2

Hose stops



Hose stop with six exchangeable inserts. Hose (O)
10 - 34 mm

R+M Nr.
741 03



R+M Nr.	(O)
200 000 171	14.5
200 000 170	16.0
200 000 172	17.7
200 000 173	21.5
200 000 174	24.5

Bolt sets



Stainless steel.
Set for bracket

R+M Nr.
741 02