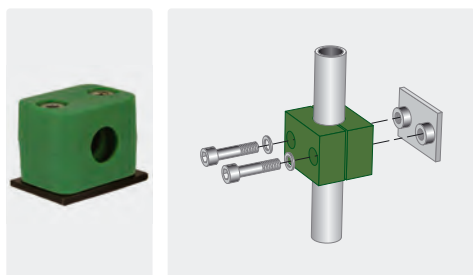
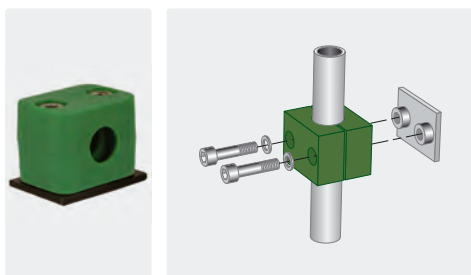


Pipe holder

Assembly on welding plate

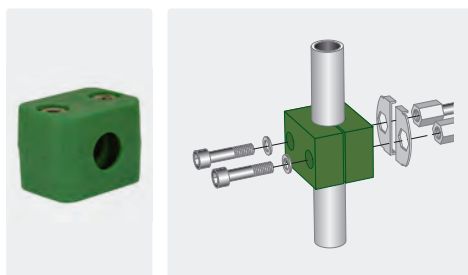


Holder including bolts, discs and welding plate.



Holder including bolts, discs and welding plate.

Simple assembly



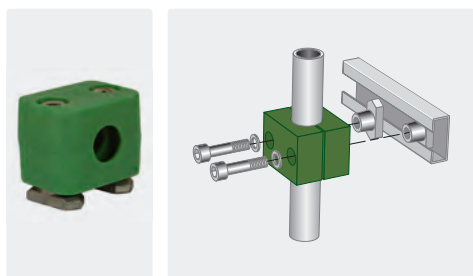
Holder including bolts and discs, zinc-plated steel. Suitable for twin assembly and assembly on double welding plate.

R+M Nr.	RØ	(M)
598 100 49	10	stainless steel
598 120 49	12	stainless steel
598 150 49	15	stainless steel
598 160 49	16	stainless steel
598 180 49	18	stainless steel
598 200 49	20	stainless steel
598 220 49	22	stainless steel

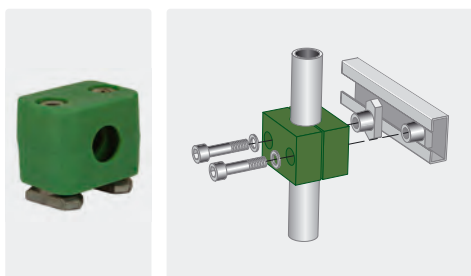
R+M Nr.	RØ	(M)
598 100 4	10	zinc-plated steel
598 120 4	12	zinc-plated steel
598 150 4	15	zinc-plated steel
598 160 4	16	zinc-plated steel
598 180 4	18	zinc-plated steel
598 200 4	20	zinc-plated steel
598 220 4	22	zinc-plated steel

R+M Nr.	RØ	(M)
598 100 3	10	zinc-plated steel
598 120 3	12	zinc-plated steel
598 150 3	15	zinc-plated steel
598 160 3	16	zinc-plated steel
598 180 3	18	zinc-plated steel
598 200 3	20	zinc-plated steel
598 220 3	22	zinc-plated steel

For assembly on support

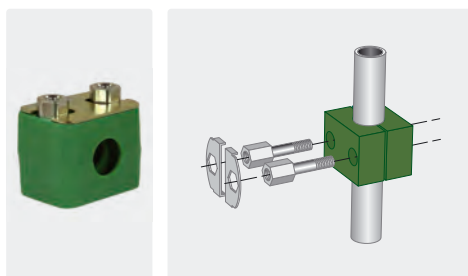


Holder including nuts for track and bolts with discs.



Holder including nuts for track and bolts with discs.

Twin assembly



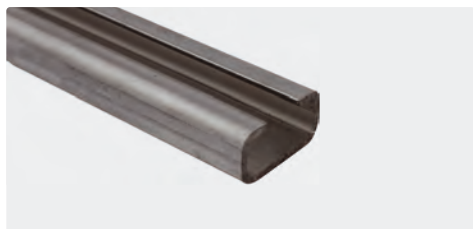
Holder including twin bolts and fixing support. Zinc-plated steel

R+M Nr.	RØ	(M)
598 100 19	10	stainless steel
598 120 19	12	stainless steel
598 150 19	15	stainless steel
598 160 19	16	stainless steel
598 180 19	18	stainless steel
598 200 19	20	stainless steel
598 220 19	22	stainless steel

R+M Nr.	RØ	(M)
598 100 1	10	zinc-plated steel
598 120 1	12	zinc-plated steel
598 150 1	15	zinc-plated steel
598 160 1	16	zinc-plated steel
598 180 1	18	zinc-plated steel
598 200 1	20	zinc-plated steel
598 220 1	22	zinc-plated steel

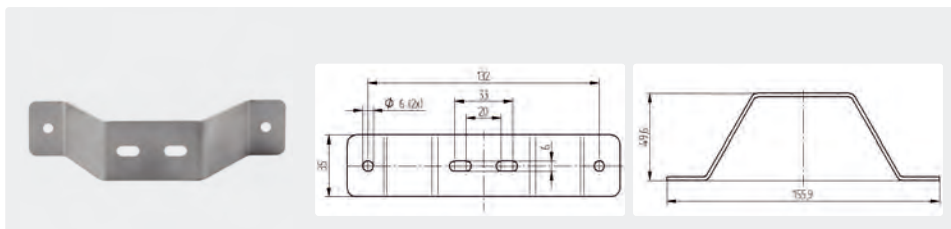
R+M Nr.	RØ	(M)
598 150 2	15	zinc-plated steel
598 160 2	16	zinc-plated steel
598 180 2	18	zinc-plated steel
598 200 2	20	zinc-plated steel
598 220 2	22	zinc-plated steel

Support pipe holder



Length 2 m

R+M Nr.	(M)
598 002 09	stainless steel



R+M Nr.	(M)
040 003 895	stainless steel

Symbols RØ pipe diameter in mm δ wall thickness (M) material (P) pressure (B) weight Ø diameter VPE packing unit shipment by truck