

## Floor cleaner Mosmatic

### Surface cleaner FL-AHY 520 Mosmatic



Completely stainless steel. Surface cleaner with an additional frame for highest stability. A height adjustable housing including a device for extraction. Foldable handle bar for space saving and reasonable transport. 2 nozzles are required. Suitable for 50 mm suction hose. 4 industrial castors (100 mm). Max. 2,400 l/h / 120 °C

R+M Nr.	∅	G	P
108 809 71	520 mm	1/4" F	max. 500 bar

### Surface cleaner FL-SAR 300 Mosmatic

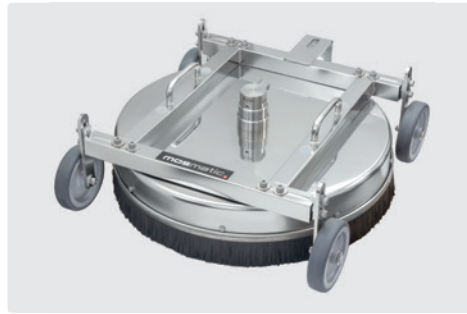


Surface cleaner AQUA with recovery. Complete with integrated suction system, spray gun and nozzles. Recovery Port: 40 mm  
Designed for 150 bar / 15 l / min. The black anodized aluminum suction device collects the dirty water via a Venturi and double housing system. It can then be led away via a commercially available suction hose. The use of a vacuum system is no longer needed.  
Max. 275 bar / 120 °C.

**Not suitable for paved areas.**

R+M Nr.	∅	G	P
108 782 43	300 mm	3/8" F	max. 275 bar

### Roof cleaner DR-520 Mosmatic



Completely stainless steel. Roof cleaner with an additional frame for highest stability. Adjustable in width of up to 90 mm and in height of up to 33 mm. Including a safety loop for the safety rope with clippers. The use of the ST-550 foot valve is recommended. 4 industrial castors (125 mm).  
Max. 2,400 l/h / 120 °C

R+M Nr.	∅	G	P
108 809 72	520 mm	3/8" F	max. 350 bar
108 809 73	520 mm	3/8" F	max. 500 bar

**The accident prevention regulations of the Employer's Liability Insurance Association regarding "the use of high pressure cleaner" (BGV D15) & "tasks with liquid jets" (BGV D26) in addition to DIN EN 60335-2-79 and DIN EN 1829-1 prescribe that manually guided spray units (like roof cleaners) shall be provided with a manually-actuated control for release of the cleaning solution.**

### Surface and underbody cleaner Hurricane Flip, 2 - in - 1 Mosmatic

The Mosmatic Hurricane Flip can be used as surface cleaner and underbody wash, all in one unit.

The Hurricane Flip can be converted from a floor cleaner to an undercarriage cleaner in just a few simple steps. The proven toggle joint makes easy and effortless cleaning possible. Positioned on the side of the housing, this special design enables cleaning under the vehicle.

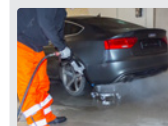
With 3 stainless steel castors  $\varnothing$  60 mm.  
Incl. 2 high-pressure nozzles ex works for e.g. 15 l / min. at 130 bar or 18 l/min. at 175 bar.

Max. 275 bar / 120 °C.



#### Toggle joint:

Thanks to the low profile, the vehicle does not need to be lifted on a platform to be cleaned.



R+M Nr.	∅	G	P
108 786 02	300 mm	3/8" F	max. 275 bar