

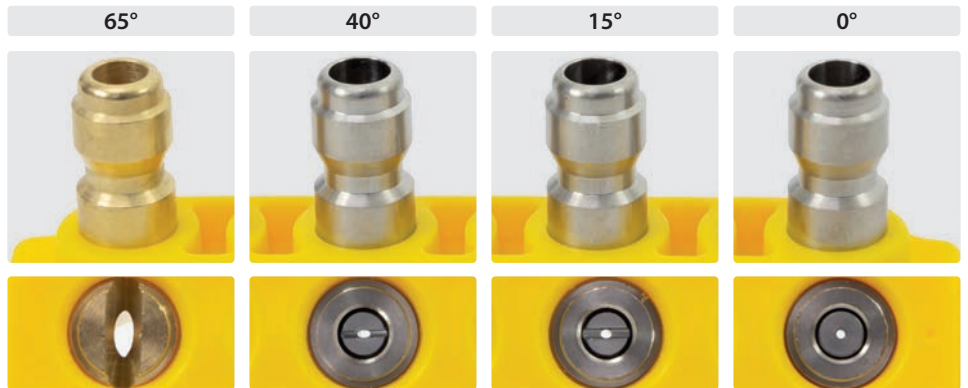
## Quick connect nozzle set by Suttner

- » Consisting of:  
colored plastic holder inclusive:  
1 x Low pressure nozzle. Brass,  
1 x Flushing nozzle. Stainless steel,  
1 x Chiseling nozzle. Stainless steel,  
1 x Blasting nozzle. Stainless steel
- » High strength plastic. Highly impact resistant
- » Stainless steel nozzles: long lifetime and excellently thermal and chemical stability, resistant to mineral acids and alkaline solutions.
- » Connection ST-245 coupling,  $\odot$  1/4" F, R+M Nr. 200 245 500
- » Suitable for applications requiring a frequent and quick change of the spraying angle
- » Max. 350 bar



D	R+M Nr.	$\odot$
030	125 852 030	ST-245
035	125 852 035	ST-245
040	125 852 040	ST-245
045	125 852 045	ST-245

### Colour coding of Suttner nozzle set holder according to nozzle size



**Low pressure nozzle.**  
Brass.  
Designed for prespraying detergents on all kinds of surfaces. Low pressure rinsing.

**Flushing nozzle.**  
Stainless steel.  
Best suited for flushing dirt, mud and grime.

**Chiseling nozzle.**  
Stainless steel. The spray should be directed at a 45° angle to the surface and used like a scraper to remove paint, grease and dirt.

**Blasting nozzle.** Stainless steel. Delivers a very concentrated stream of water. **Care should be used to avoid gouging wood or damaging fragile surfaces.**

## Coupling-system ST-245

### Nipple ST-245



$\odot$  1/4" M.  
Stainless steel.  
Max. 350 bar

R+M Nr.	$\leftrightarrow$
040 005 447	27.5



$\odot$  1/4" M.  
Stainless steel.  
Max. 350 bar

R+M Nr.	$\leftrightarrow$
040 005 446	33.5



$\odot$  1/4" M. Stainless steel. Max. 350 bar.  
For wear cone

R+M Nr.	$\leftrightarrow$
040 005 445	3 42.0

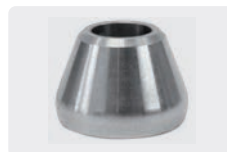
### ST-245 Coupling / wear cone ST-245



R+M Nr.	$\odot$
200 245 500	1 1/4" F



R+M Nr.	$\odot$
200 245 510	1 3/8" M



Stainless steel.  
For 040 005 445

R+M Nr.	
040 005 431	2



POM. Red.  
For 040 005 445

R+M Nr.	
020 005 432	2



POM. Black.  
For 040 005 445

R+M Nr.	
020 005 431	2



4  
Suitable for all 1/4" F nozzles for sewer cleaning.