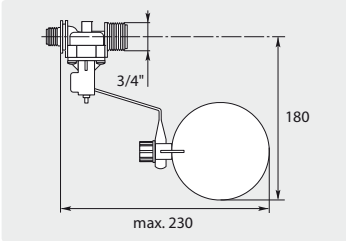


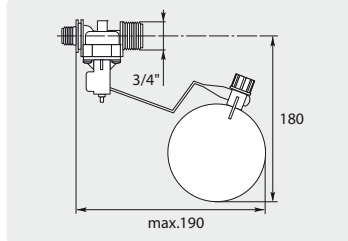
## Float valves

AK with ball horizontal



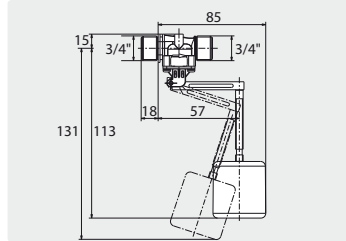
Plastic. Pressure 0.3 - 10 bar.  
Max. 22 l/min / 60 °C

AK with ball vertical



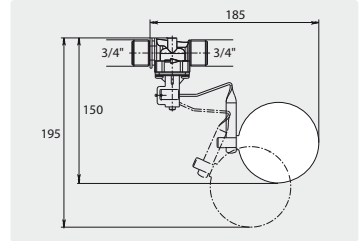
Plastic. Pressure 0.3 - 10 bar.  
Max. 22 l/min / 60 °C

AK with PE float



PE float. Pressure 0.3 - 10 bar.  
Max. 22 l/min / 60 °C

AK with ball



Plastic. Pressure 0.3 - 10 bar.  
Max. 22 l/min / 60 °C

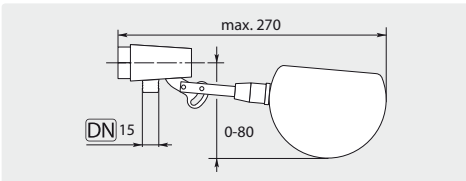
R+M Nr.	↺	↻	⊙
701 40*	3/8" M	3/4" M	10 mm
701 401*	1/2" M	3/4" M	10 mm
701 402	3/4" M	3/4" M	10 mm

R+M Nr.	↺	↻	⊙
701 404	3/8" M	3/4" M	10 mm

R+M Nr.	↺	↻	⊙
701 405	3/4" M	3/4" M	10 mm

R+M Nr.	↺	↻	⊙
701 403	3/4" M	3/4" M	10 mm

ST-8 with ball



Brass / plastic.  
Max. 10 bar / 22 l/min / 60 °C

R+M Nr.	↺	⊙
200 008 520	1/2" F	12 mm

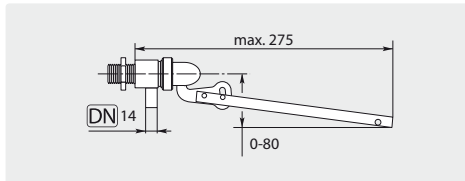
Plastic



Brass / plastic. 3/4" M. DN 9.5.  
Max. 60 °C

R+M Nr.
701 500 100

PEKI without ball



3/8" M. Brass. Max. 10 bar / 80 °C

R+M Nr.	↺	⊙
701 00	16 l/min	8 mm
701 05	30 l/min	12 mm

Level sensor LS809-51



Plastic. Cable length 2 x 500 mm.  
250 V / 1 A / 70 W. -30 °C - +105 °C

R+M Nr.
701 880 951

Ball ST-8



R+M Nr.	TYP
030 000 180	swimmer
020 000 610	screw

Ball PEKI



R+M Nr.
701 35

Seal kit PEKI



R+M Nr.
701 001

Ball AK



R+M Nr.
701 43

Membrane AK



R+M Nr.
701 42

Accessories AK valves



Clamp

R+M Nr.
701 41



Hose tail DN 13 mm

R+M Nr.	⊙
711 60	3/4" F

\* limited stock