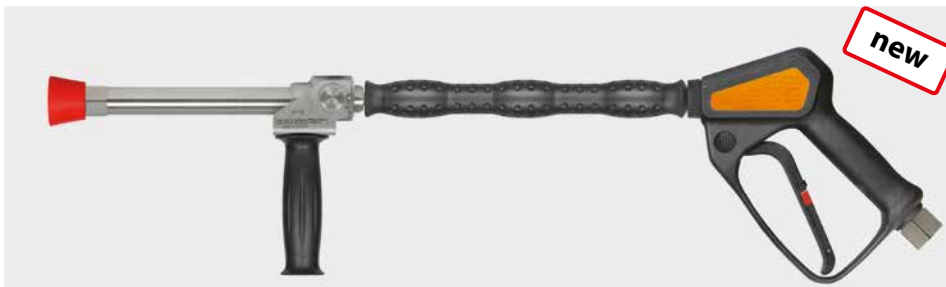


## Longcast lances



3/8" F. Stainless steel. Longcast lance 300 mm with vented handle ST-29 Cool & Compact 330 mm, gun ST-2300, grip aside and nozzle protector made out of plastic without nozzle.  
Max. 280 bar / 45 l/min / 100 °C

| R+M Nr.     |                                 |        |
|-------------|---------------------------------|--------|
| 200 078 510 | nozzle protector without nozzle | 3/8" F |



1/2" F. Stainless steel. Longcast lance 300 mm with vented handle ST-29 Cool & Compact 330 mm, gun ST-2320, grip aside and nozzle protector made out of plastic without nozzle.  
Max. 150 bar / 80 l/min / 100 °C

| R+M Nr.     |                                 |        |
|-------------|---------------------------------|--------|
| 200 078 520 | nozzle protector without nozzle | 1/2" F |



**LTF**

1/2" F. Stainless steel. Longcast lance 300 mm with vented handle ST-29 Cool & Compact 330 mm, gun easyfarm365+, grip aside and nozzle protector made out of plastic without nozzle.  
Max. 250 bar / 60 l/min / 100 °C

| R+M Nr.     |                                 |               |
|-------------|---------------------------------|---------------|
| 200 078 530 | nozzle protector without nozzle | 1/2" F swivel |



1/4" M. Stainless steel. Longcast lance 300 mm with vented handle ST-29 Cool & Compact 330 mm, grip aside and nozzle protector made out of plastic without nozzle.  
Max. 280 bar / 130 l/min / 100 °C

| R+M Nr.     |                                 |        |
|-------------|---------------------------------|--------|
| 200 078 500 | nozzle protector without nozzle | 1/4" M |

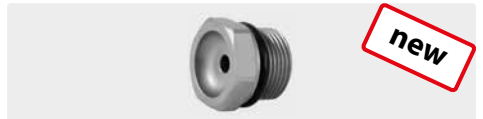
The longcast lance can be connected to a low pressure pump, to a high pressure pump, to the public water system or to the extinguishing water network.

The lance works in the medium pressure range. By means of its very good solidity, good handling and compactness the lance is especially suitable for the intensive use.

The lateral hand grip makes a stepless adjustment of the water jet during the operation possible. A long casting point jet or a progressive, conical spray jet can be set.

In order to realize ideal cleaning results the nozzle size needs to be adapted to the pump performance (pressure and water quantity).

### Nozzles for longcast lances



M15x1 M. Stainless steel

| R+M Nr.     | D      |
|-------------|--------|
| 200 078 412 | 1.2 mm |
| 200 078 415 | 1.5 mm |
| 200 078 420 | 2.0 mm |
| 200 078 423 | 2.3 mm |
| 200 078 425 | 2.5 mm |
| 200 078 430 | 3.0 mm |
| 200 078 435 | 3.5 mm |

