

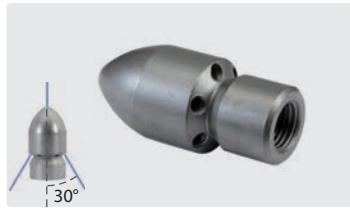
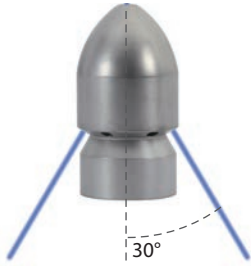
ST-49 Ball type nozzle, 30°

Made out of wear-resistant, hardened stainless steel provided with front jet insert or blind plug (interchangeable). Angle of jet is 30°, sturdy wall thickness, long service life and a minimum of wear and tear. All nozzles are provided with hardened stainless steel inserts. Due to this feature the

efficiency is considerably higher compared with those nozzles with drilled holes and the service life is several times longer.
Max. 500 bar

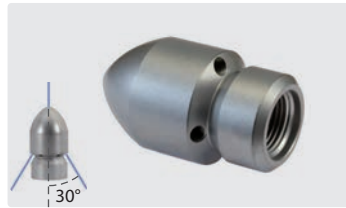
Applications:

- » Suitable for removal of sludge deposits
- » Desilting of pipes
- » Opening of frozen pipelines



1/4" F.
Outside \varnothing 25 mm.
rear jets, with front jet

R+M Nr.	D	rear jets
649 030 216 060	060	6
649 030 216 080	080	6
649 030 216 100	100	6
649 030 216 120	120	6
649 030 216 150	150	6
649 030 216 200	200	6



3/8" F.
Outside \varnothing 30 mm.
rear jets, with front jet

R+M Nr.	D	rear jets
649 030 314 060	060	4
649 030 314 080	080	4
649 030 314 100	100	4
649 030 314 120	120	4
649 030 314 150	150	4
649 030 314 200	200	4



3/8" F.
Outside \varnothing 30 mm.
rear jets, with front jet

R+M Nr.	D	rear jets
649 030 316 060	060	6
649 030 316 080	080	6
649 030 316 100	100	6
649 030 316 120	120	6
649 030 316 150	150	6
649 030 316 200	200	6



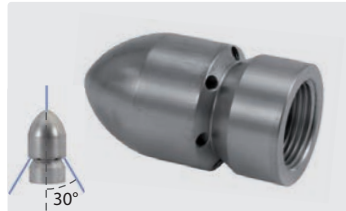
1/2" M. MR cone.
Outside \varnothing 30 mm.
rear jets, with front jet

R+M Nr.	D	rear jets
649 040 416 060	060	6
649 040 416 080	080	6
649 040 416 100	100	6
649 040 416 120	120	6
649 040 416 150	150	6
649 040 416 200	200	6



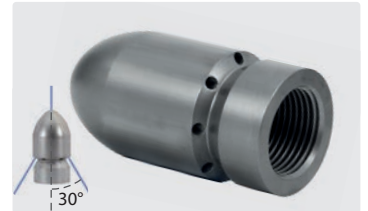
1/2" F.
Outside \varnothing 30 mm.
rear jets, with front jet

R+M Nr.	D	rear jets
649 030 416 060	060	6
649 030 416 080	080	6
649 030 416 100	100	6
649 030 416 120	120	6
649 030 416 150	150	6
649 030 416 200	200	6
649 030 416 315	315	6



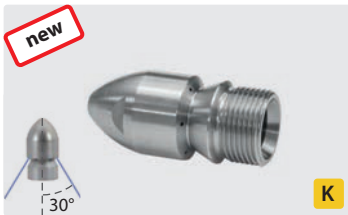
3/4" F.
Outside \varnothing 38 mm.
rear jets, with front jet

R+M Nr.	D	rear jets
649 030 516 100	100	6
649 030 516 120	120	6
649 030 516 150	150	6
649 030 516 170	170	6
649 030 516 200	200	6
649 030 516 250	250	6



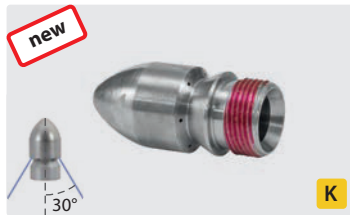
1" F.
Outside \varnothing 48 mm.
rear jets, with front jet

R+M Nr.	D	rear jets
649 030 618 120	120	8
649 030 618 150	150	8
649 030 618 170	170	8
649 030 618 210	210	8
649 030 618 260	260	8
649 030 618 315	315	8
649 030 618 390	390	8



M22x1.5 M.
Outside \varnothing 25 mm.
rear jets

R+M Nr.	D	rear jets
120 000 833*	090	6



TR22 M**.
Outside \varnothing 25 mm.
rear jets

R+M Nr.	D	rear jets
120 000 832	090	6

** thread coated with microencapsulated thread locking fluid
* stainless steel

Symbols \varnothing nozzle \varnothing diameter rear jets