

## Driver for rotating nozzles

Rotor nozzle driver and rotor nozzles are the perfect combination for drilling through blockages with its rotary forward facing jet. Driven up to the blockage by 6 powerful rear facing hardened stainless steel nozzles the high speed forward facing spinning jet creates a cone shape that has



For ST-357/ST-456 rotating nozzles. Hardened stainless steel. Max. 350 bar.  $\varnothing$  1/4" M and 6 M5 threads for nozzle inserts (see table below).

R+M Nr.	$\varnothing$
040 075 200	1/4" F
040 075 205	3/8" F

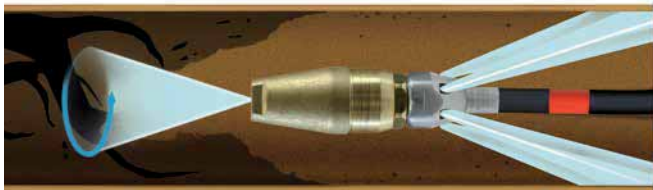
enough cutting force to blast through roots and scale. It is also ideal for cutting up and shredding tissue and fat deposits



For ST-458/ST-559 rotating nozzles. Hardened stainless steel. Max. 500 bar.  $\varnothing$  1/4" M and 6 M5 threads for nozzle inserts (see table below).

R+M Nr.	$\varnothing$
040 075 210	3/8" F
040 075 215	1/2" F

## Functional principle



## Nozzle Inserts

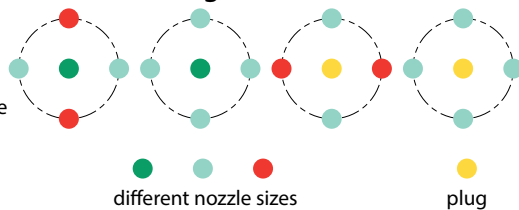


Full jet. 500 bar.  
Hex for allen key 2.5 mm.  
Hardened stainless steel

R+M Nr.	TYP	hole- $\varnothing$	nozzle size
040 075 000	M5	plug	0
040 075 005	M5	0.5 mm	0066
040 075 006	M5	0.6 mm	0085
040 075 007	M5	0.7 mm	0117
040 075 008	M5	0.8 mm	0133
040 075 009	M5	0.9 mm	0161
040 075 010	M5	1.0 mm	0237
040 075 012	M5	1.2 mm	0293
040 075 015	M5	1.5 mm	0458
040 075 020	M5	2.0 mm	0885

## Nozzle configuration

Nozzle inserts for sewer cleaning nozzles and nozzle driver have to be installed symmetrically.



Symbols  $\varnothing$  TYP type  $\varnothing$  weight  $\varnothing$  diameter  $\varnothing$  height  $\varnothing$  length  $\varnothing$  inlet  $\varnothing$  nozzle