

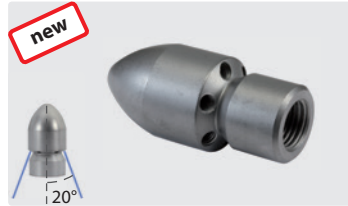
ST-49 Ball type nozzle, 20°

Made out of wear-resistant, hardened stainless steel provided with front jet insert or blind plug (interchangeable). Angle of jet is 20°, sturdy wall thickness, long service life and a minimum of wear and tear. All nozzles are provided with hardened stainless steel inserts. Due to this feature the

efficiency is considerably higher compared with those nozzles with drilled holes and the service life is several times longer.
Max. 500 bar

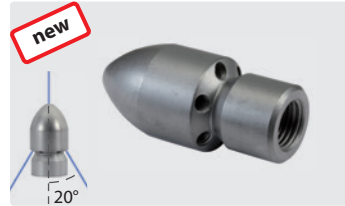
Applications:

- » Suitable for removal of sludge deposits
- » Desilting of pipes
- » Opening of frozen pipelines



1/4" F.
Outside \varnothing 25 mm.
6 rear jets

R+M Nr.	D
649 090 206 060	060
649 090 206 080	080
649 090 206 100	105
649 090 206 120	120
649 090 206 150	160
649 090 206 200	200



1/4" F.
Outside \varnothing 25 mm.
6 rear jets, with front jet

R+M Nr.	D
649 090 216 060	060
649 090 216 080	080
649 090 216 100	100
649 090 216 120	120
649 090 216 150	150
649 090 216 200	200



3/8" F.
Outside \varnothing 30 mm.
6 rear jets

R+M Nr.	D
649 090 306 060	060
649 090 306 080	080
649 090 306 100	105
649 090 306 120	120
649 090 306 150	160
649 090 306 200	200



3/8" F.
Outside \varnothing 30 mm.
6 rear jets, with front jet

R+M Nr.	D
649 090 316 060	060
649 090 316 080	080
649 090 316 100	100
649 090 316 120	120
649 090 316 150	150
649 090 316 200	200

Coupling-system ST-245

Nipple ST-245



\varnothing 1/4" M.
Stainless steel.
Max. 350 bar

R+M Nr.	D
040 005 447	27.5



\varnothing 1/4" M.
Stainless steel.
Max. 350 bar

R+M Nr.	D
040 005 446	33.5



\varnothing 1/4" M. Stainless steel. Max. 350 bar.
For wear cone

R+M Nr.	D
040 005 445	3 42.0

ST-245 Coupling / wear cone ST-245

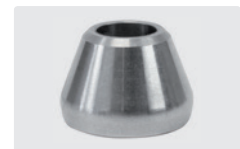


R+M Nr.	D
200 245 500	1 1/4" F



R+M Nr.	D
200 245 510	1 3/8" M

For 040 005 445



R+M Nr.	D
040 005 431	2



4 Suitable for all 1/4" F nozzles for sewer cleaning.