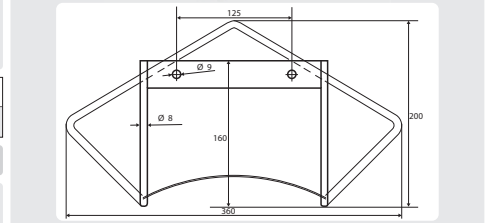
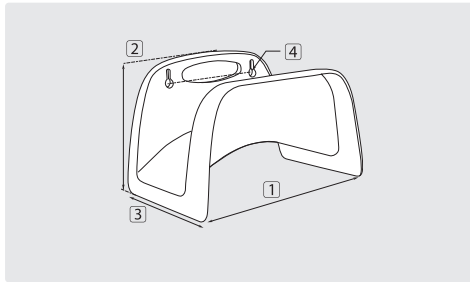


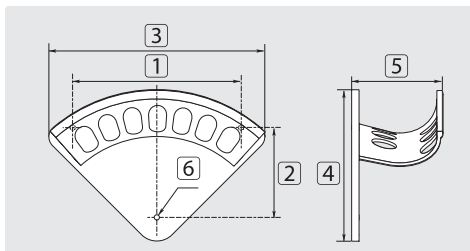
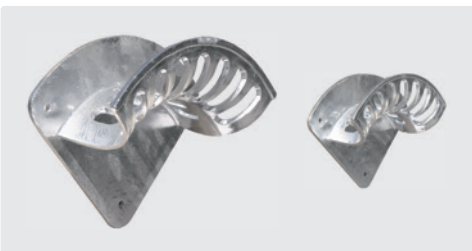
Hose holder

Hose holder



R+M Nr.	M	holding capacity	1	2	3	4
110 00	plastic	1/2" = 40 m / 3/4" = 30 m	260	170	170	140

Hose holder aluminium



Holding capacity 1/2" = 40 m / 3/4" = 30 m. Hole size 125 mm. W x H x D = 360 x 200 x 170 mm

R+M Nr.	M
110 06	polished stainless steel, 1.4301

Hose holder

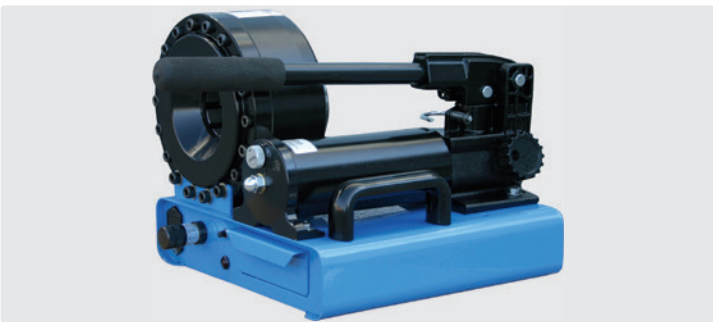


Holder with hooks. Suitable for scaffolding

R+M Nr.	TYP	holding capacity	1	2	3	4	5	6
110 01	S	1/4" = 30 m / 3/8" = 20 m	155	77	188	145	70	5.5
110 02	M	3/8" = 30 m / 1/2" = 20 m	255	107	266	200	108	6.0
110 03	L	1/2" = 30 m / 3/4" = 20 m	272	145	348	255	143	8.0
110 031	XL	3/4" = 30 m / 1" = 20 m	366	162	417	307	187	10.0

R+M Nr.	M
110 10	zinc-plated steel

Hose press

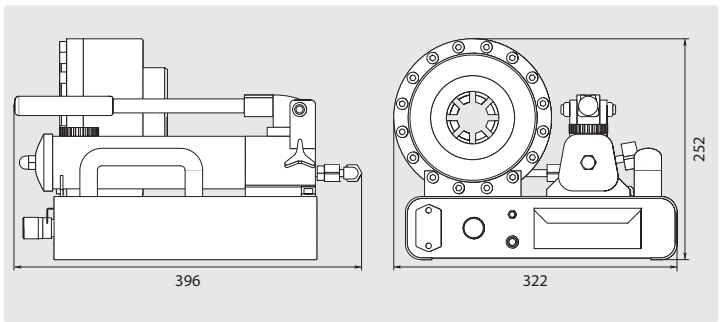


R+M Nr.	pressing jaws incl.
300 0	5 sets (12 - 27 mm)

The P16 HP hose press is an innovative, high quality machine which is especially designed for the assembly and repair of hose lines. The handling of the press is easily learnt. Fundamental features of the P16 HP:

- » access to press head on both sides
- » compact model
- » two-stage hand pump
- » variable adjustment of press measures
- » check of press measures by signal light
- » carrying handle
- » integrated drawer in the housing for storing the pressing jaws

* pressing jaws excluded



Spare pressing jaws

TYP	press area	R+M Nr.
P16 HP-10 *	10 - 12 mm	300 001 0
P16 HP-12	12 - 14 mm	300 001 2
P16 HP-14	14 - 16 mm	300 001 4
P16 HP-16	16 - 19 mm	300 001 6
P16 HP-19	19 - 23 mm	300 001 9
P16 HP-23	23 - 27 mm	300 002 3
P16 HP-27 *	27 - 31 mm	300 002 7
P16 HP-31 *	31 - 36 mm	300 003 1

Technical specifications

length of basic jaws	64 mm
max. opening diameter	min. press diameter + 20 mm
press performance	2-steel wire hose up to DN 25
press area	∅ 10 - 45 mm
max. press power	720 kN
power	3.62 cm ³ / 0.90 cm ³
pressure	14 bar / 630 bar
weight (without oil)	20 kg

Symbols ∅ diameter M material TYP type shipment by truck DN nominal diameter ⊙ thread