

# Rotating PV and solar system cleaner



The choice of perfection



**Rotating brushes for the effective cleaning of PV and solar systems.**

For more feed-in tariffs!

Even annoying Sahara dust and bird droppings are easily loosened and removed.



## The rotating PV and solar cleaner, also suitable for connection to telescopic lances

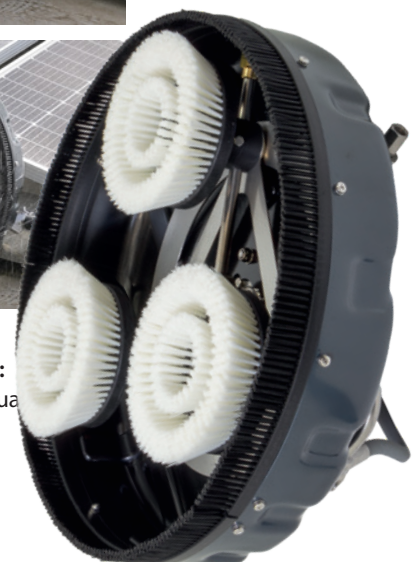
- Effective cleaning of solar modules thanks to the triple rotor arm with aqua drive for three rotating special nylon brushes.
- Brush rotor arm nozzle holder: 3 x 1/4" F. We recommend the full jet as drive nozzles.
- 3 brushes with diameter: 160 mm, bristle length: 40 mm. Brush body with stainless steel bearings.
- Height adjustable 15 mm.
- Robust design thanks to the stabilization ring and stainless steel fixings.
- 520 mm wide hood made of lightweight but indestructible ABS plastic. Weight 7.4 kg.
- Top-class swivel joint for professional industrial use, suitable for applications up to around 500 operating hours per year. Triple bearings, carbide seals.
- All water-conducting components are made of stainless steel.
- Inlet 1/4" F on a 90° pivoting bracket, which is cushioned by a rubber stop on the hood.
- A splash guard protects against flying dirt and ensures a well-moistened cleaning surface so that the brushes clean properly.
- Working pressure: 50-70 bar / Temperature: 50 °C
- Flow >15 l/min.



**Rotating brush trio:**  
Aqua drive thanks to a triple rotor arm, which is also equipped with a stainless steel fixation.



**Brush height adjustable:**  
The brushes can be gradually raised higher.



# Rotating PV and solar system cleaner



The choice of perfection

## Rotating PV and solar system cleaner

In most cases, photovoltaic module surfaces cannot simply be cleaned with water and a sponge and it would simply be too dangerous, since the modules are often mounted on the roof at an angle of 30 to 45°. For this purpose, R+M / Suttner offers a very efficient brush cleaning with aqua drive: three coordinated nylon brushes with a double bristle arrangement on a triple rotor arm enable you to thoroughly clean your solar modules and photovoltaic systems. No matter if industry, trade, agriculture or private buildings. The possible uses are unlimited, especially in locations that are exposed to heavy pollution. The rotating PV and solar cleaner requires 50-70 bar working pressure.

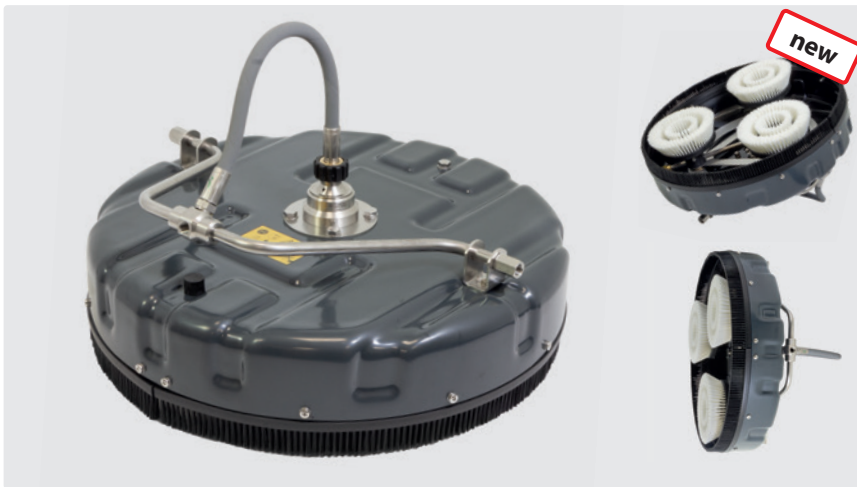
- Safe and efficient cleaning of solar and photovoltaic systems, even when heavily contaminated by, for example, Saharan dust.
- Comfortable working in any position thanks to the stable, telescopic lance

Gentle cleaning of solar modules, since the washing brush works in the low-pressure range, damage to the modules is ruled out

- With the help of the telescopic rods, the rotating PV and solar system cleaner can be guided easily and safely from the ground, roof or cherry picker
- The soft-grip handle with integrated ball valve enables the brush cleaning to be operated conveniently

Soiling of the surface means loss of performance and lower feed-in tariffs. The rotating PV and solar cleaner pays for itself after a short period of time.

We also offer you optional mobile water softening units, which prevent lime-scale residues on the cleaned surfaces. In addition, special phosphates bind the lime components dissolved in the water.



R+M Nr.	⊗	⊖	∅	(M)	°C	(P)	(δ)
710100900	1/4" F	3 x 1/4" F	520 mm	ABS/stainless steel	50 °C	50-70 bar	7.4 kg

## Accessories

### ST-29 Cool & Compact



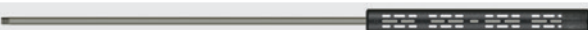
R+M Nr.	⊗	(ISO)	↔	(M)
200 029 410	1/4" AG	400 mm	1,000 mm	stainless steel
200 029 412	1/4" AG	400 mm	1,200 mm	stainless steel

### ST-007



R+M Nr.	⊗	(ISO)	↔	(M)
070 010 009	1/4" AG	400 mm	1,000 mm	stainless steel
070 012 009	1/4" AG	500 mm	1,200 mm	stainless steel
070 015 009	1/4" AG	500 mm	1,500 mm	stainless steel
070 020 009	1/4" AG	500 mm	2,000 mm	stainless steel

### ST-001 with vented handle ST-9



R+M Nr.	⊗	(ISO)	↔	(M)
511 59	1/4" AG	380 mm	1,000 mm	stainless steel
511 69	1/4" AG	380 mm	1,200 mm	stainless steel
511 719	1/4" AG	760 mm	1,500 mm	stainless steel
511 99	1/4" AG	760 mm	2,000 mm	stainless steel

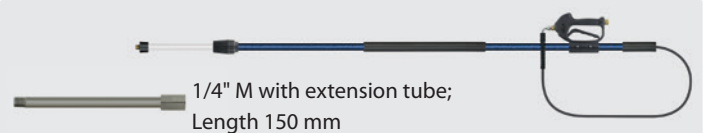
### Connections for your spray gun with coupling KW



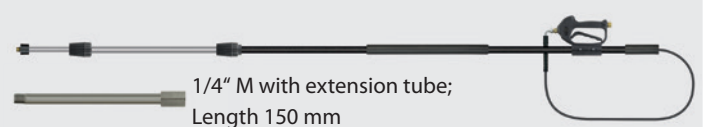
Plug KW : 1/4" F. SW 19.  
Polished stainless steel.  
For moulded handles.  
Plug for aluminium washer

R+M Nr.	040 001 248
---------	-------------

### R+M / Suttner high-pressure telescopic lances Aluminum/Fiberglass



R+M Nr.	(δ)	⊖	↔	⊗
525 087 115	2.7 kg	1/4" M with extension	2.45 - 3.70 m	3/8" F



R+M Nr.	(δ)	⊖	↔	⊗
525 087 215	3.3 kg	1/4" M with extension	2.45 - 5.65 m	3/8" F

Symbols (M) material ∅ diameter ⊗ inlet ⊖ outlet °C temperature (δ) weight (P) pressure ⊗ thread ↔ length (ISO) insulation