

# Suttner float valve ST-8



The choice of perfection



**Application:**

- Tank filling
- High-pressure cleaning devices (system separation according to EN 1717)
- car washes
- Irrigation systems
- Ice machines
- industrial equipment



## Suttner float valve ST-8

- High-quality processing made of brass and plastic from Suttner
- Closes by float buoyancy
- Installation position: float horizontal
- For cold and heated drinking water, as well as physically and chemically similar media
- Temperature up to 60 °C
- Pressure: max. 10 bar



1/2" F

Adapter  
1/2" M

**Suttner water tank ST-10:** With inlet spray wall to reduce air bubbles

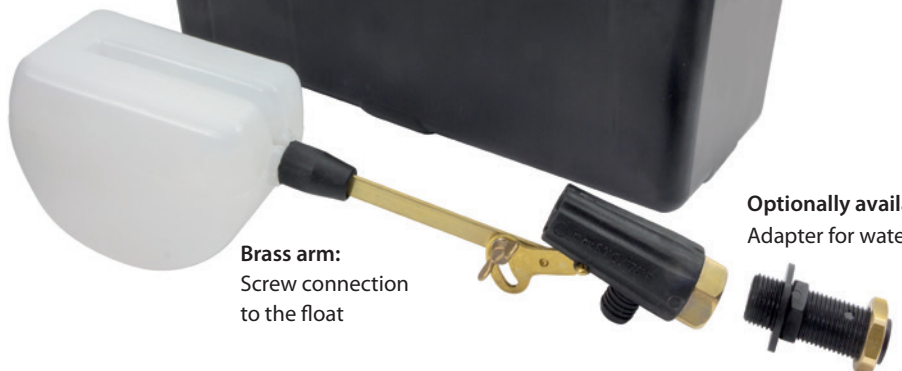
**Easy to install:** The float valve is simply screwed in with the adapter at the pre-drilled point.



Bore  
Ø 20 mm

## Technical specifications

Max. pressure	10 bar
Max. temperature	60 °C
Thread	1/2" M
Material	Brass
Float lever	Plastic
Float cylinder	Plastic
Flow	22 l/min
Interior passage	12 mm



**Brass arm:**  
Screw connection to the float

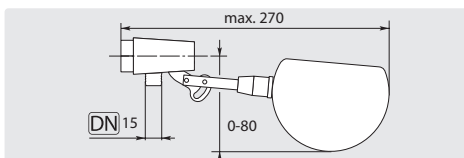
**Optionally available:**  
Adapter for water tank

# Suttner float valve ST-8



The choice of perfection

## ST-8 with ball



Brass / plastic.  
Max. 10 bar / 22 l/min / 60 °C

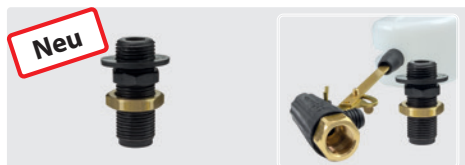
R+M Nr.		
200 008 520	1/2" F	12 mm

## Ball ST-8

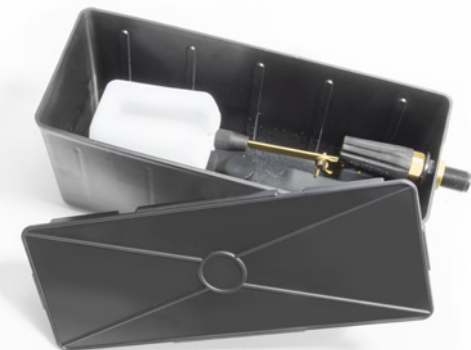


R+M Nr.	
030 000 180	Swimmer
020 000 610	Screw

## ST-8 Adapter

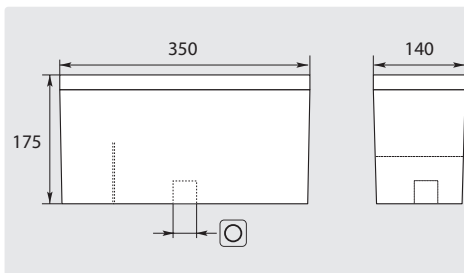


R+M Nr.		
200 008 526	1/2" M	12 mm



Float valve ST-8 assembly with Suttner water tank: Bore Ø 20 mm.

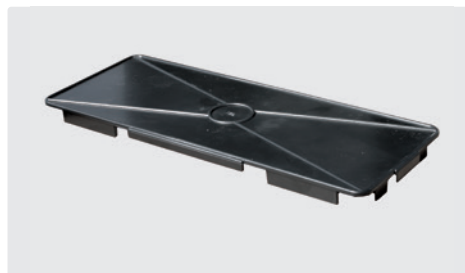
## Suttner float tank



R+M Nr.		
020 000 780	3/4"	7 l

Float tank with intake spray wall. Avoids air circulation

## Cover Suttner float tank



R+M Nr.
020 000 800