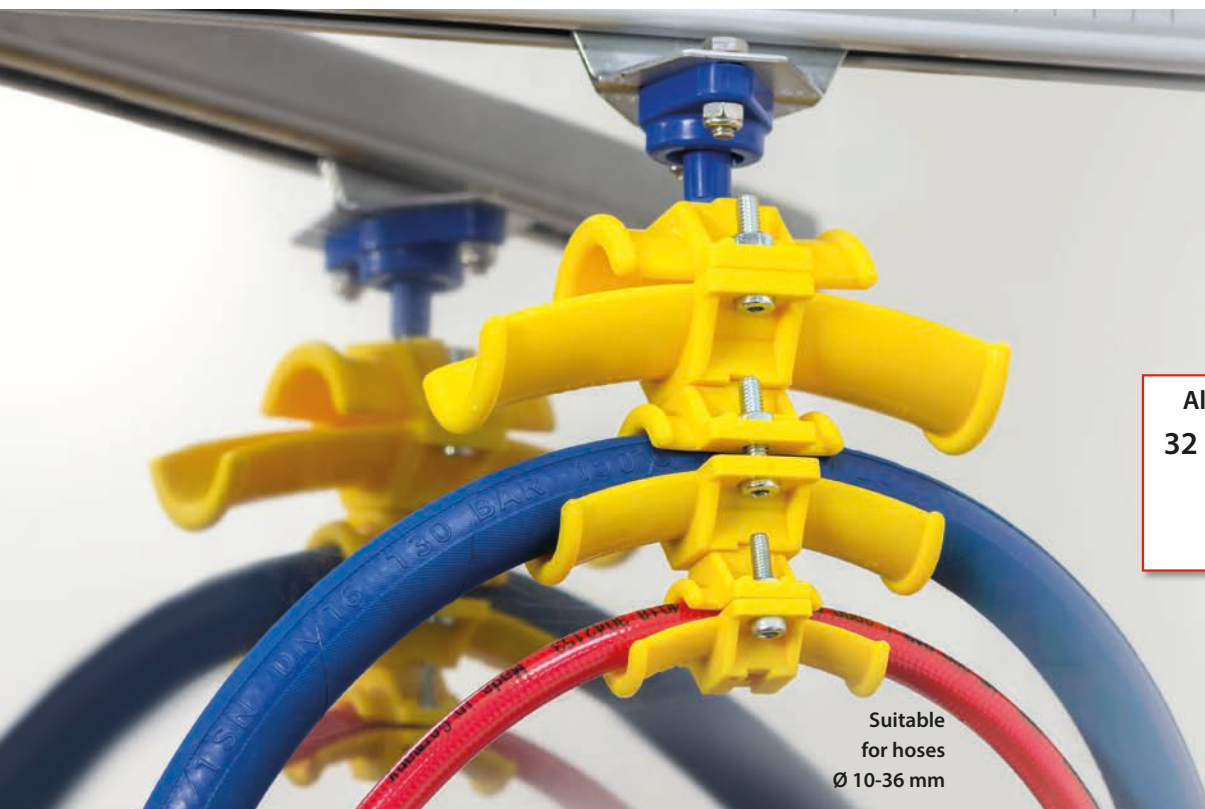


Hose guide system, profile 32 x 30 mm

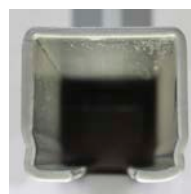


Suitable
for hoses
Ø 10-36 mm

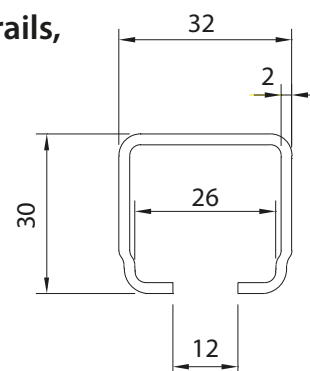
Also for existing systems:
32 mm profile elements
for applications:
- Truck and car wash

Hose guide system elements for easy installation on 32 x 30 mm profile rails, for existing systems

- Material: galvanized steel / plastic.
- For hoses with an outer diameter of 10-16, 17-25 and 26-36 mm.
- Safe and variable adaptations, indestructible and easy to disassemble.
- Smooth-running guide rollers.
- Corrosion-free and lightweight.
- Can be put together individually (modular system).
- Temperature range: - 30 °C to + 60 °C.



Profile: 32 x 30 mm
running track

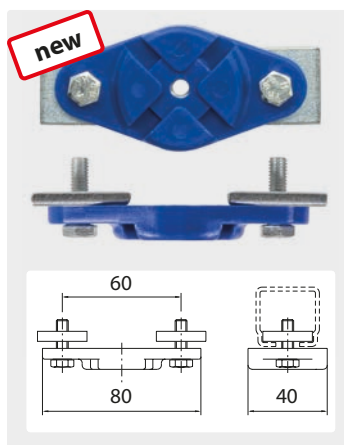


Well thought-out end clamp: The hose hanger is simply adapted 45° to the rail in the recesses in the end clamp.



With swivel joint: Movable attachment of the first hose hanger for optimal alignment.

End clamp



Plastic / galvanized steel.
- 30° C - + 60° C. For C-Rail 32 x 30

R+M Nr.
107 000 779

Additional accessories, also for 40 mm C-rails we deliver to you on request!

End stop



Galvanized steel. Rubber buffer.
- 30° C - + 60° C. For C-Rail 32 x 30

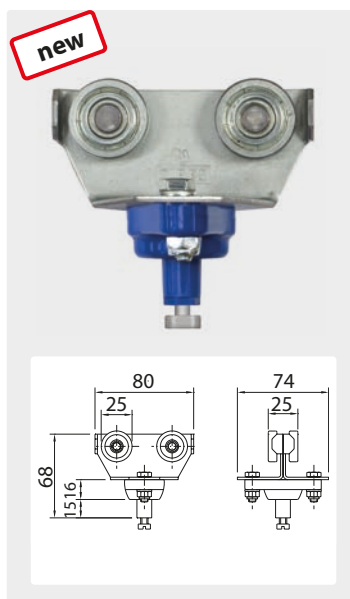
R+M Nr.
107 408 0

Hose guide system, profile 32 x 30 mm



The choice of perfection

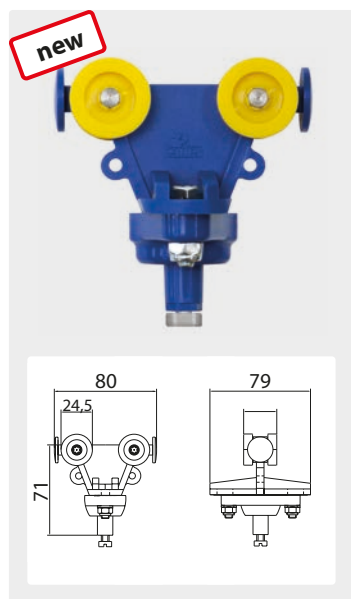
Hose trolleys Plastic / galvanized steel



For C-Rail 32 x 30 mm. Load capacity 20 kg. Rollers with ball bearings. - 30° C - + 60° C

R+M Nr.
107 000 301

Hose trolleys Plastic

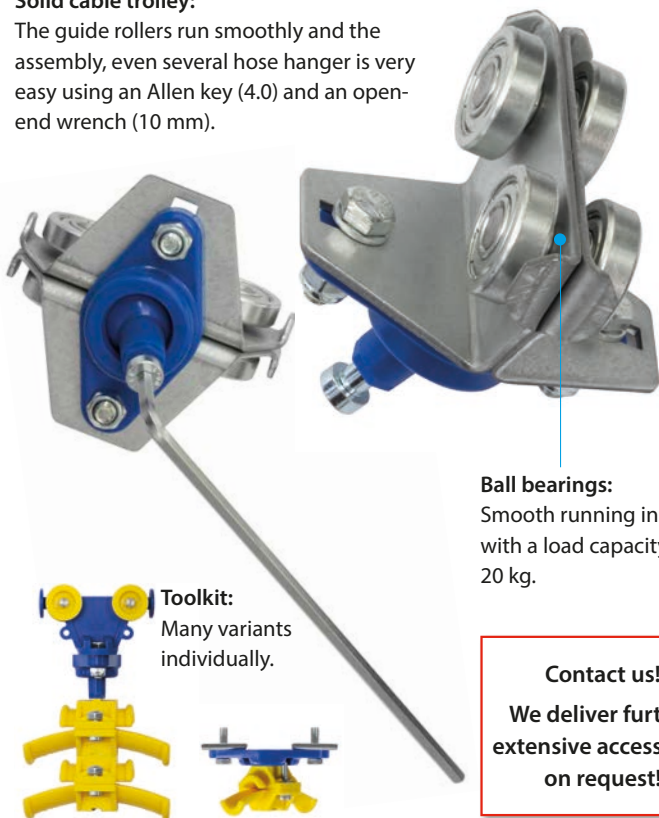


For C-Rail 32 x 30 mm. Load capacity 5 kg. Castors with steel axles. - 30° C - + 60° C

R+M Nr.
107 000 305

Solid cable trolley:

The guide rollers run smoothly and the assembly, even several hose hanger is very easy using an Allen key (4.0) and an open-end wrench (10 mm).



Ball bearings:
Smooth running in the rail with a load capacity of 20 kg.

Toolkit:
Many variants individually.

Contact us!
We deliver further extensive accessories on request!

Hose hanger plastic

Ø 10-16 mm



Galvanized steel screws. For C-Rail 32 x 30 mm. - 30° C - + 60° C

R+M Nr.	↔	R
107 000 050	70	80

Ø 17-25 mm



Galvanized steel screws. For C-Rail 32 x 30 mm. - 30° C - + 60° C

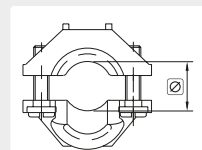
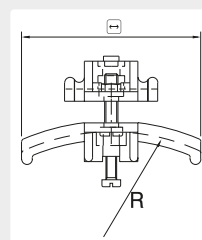
R+M Nr.	↔	R
107 000 051	100	125

Ø 26-36 mm



Galvanized steel screws. For C-Rail 32 x 30 mm. - 30° C - + 60° C

R+M Nr.	↔	R
107 000 052	140	160



C-Rail*



Galvanized steel, C-Rail 32 x 30 mm.

R+M Nr.	↔
107 000 900	4 meters
107 000 801	6 meters

* the profile is suitable for existing systems (not for items on catalog pages 387-388)